

PSC - Tooling System

PSC - Werkzeuge



ZCC Cutting Tools Europe GmbH

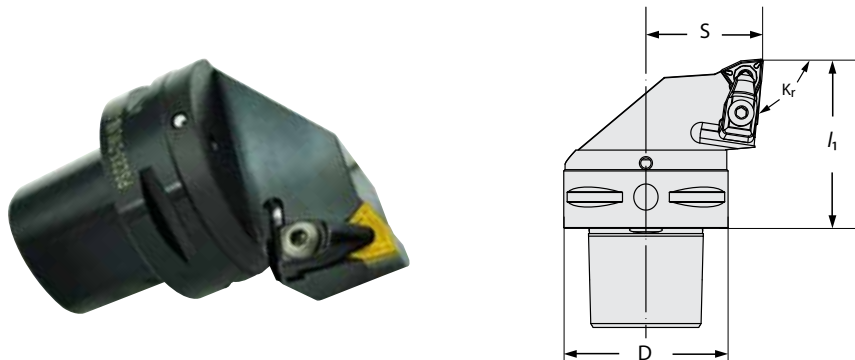
your Partner | your Value

External Turning Tool Holder / Außendrehhalter

D-Holder · D-Halter

DWLNR/L Kr=95°

- Left hand style shown unless otherwise stated
- Linker Drehhalter gezeigt sofern nicht anders angegeben



| Part number / Bestell-Nr. | Stock / Lager | Dimensions [mm] / Abmessungen [mm] | | | Insert / WSP |
|---------------------------|---------------|------------------------------------|----------------|----|--------------|
| | | D | I ₁ | S | |
| PSC40DWLNR2704008 | ○ | 40 | 40 | 27 | WN..0804.. |
| PSC40DWLNL2704008 | ○ | 40 | 40 | 27 | WN..0804.. |
| PSC50DWLNR3506008 | ○ | 50 | 60 | 35 | WN..0804.. |
| PSC50DWLNL3506008 | ○ | 50 | 60 | 35 | WN..0804.. |
| PSC63DWLNR4506508 | ○ | 63 | 65 | 45 | WN..0804.. |
| PSC63DWLNL4506508 | ○ | 63 | 65 | 45 | WN..0804.. |
| PSC80DWLNR5508008 | ○ | 80 | 80 | 55 | WN..0804.. |
| PSC80DWLNL5508008 | ○ | 80 | 80 | 55 | WN..0804.. |

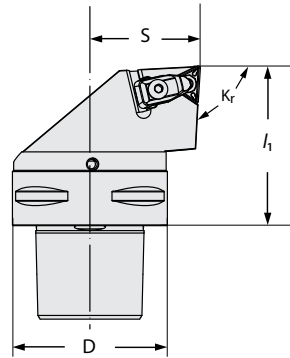
Spare Parts / Ersatzteile

| Part number / Bestell-Nr. | Screw for clamp / Schraube für Pratze | Shim / Unterlage | Wrench / Schlüssel | Clamp / Pratze | Screw for shim / Schraube für Unterlage | Spring / Feder |
|---------------------------|---|---------------------|-----------------------|-------------------|---|-------------------|
| | CM6x25C | W08BM | WH40L | C2RA | SM6x10XA1 | SPR4 |

● Ex Stock / ab Lager ○ On demand / auf Anfrage

DTJNR/L Kr=93°

- Left hand style shown unless otherwise stated
- Linker Drehalter gezeigt sofern nicht anders angegeben



| Part number / Bestell-Nr. | Stock / Lager | Dimensions [mm] / Abmessungen [mm] | | | Insert / WSP |
|---------------------------|---------------|------------------------------------|----------------|----|--------------|
| | | D | I ₁ | S | |
| PSC32DTJNR2204016 | ○ | 32 | 40 | 22 | TN..1604.. |
| PSC32DTJNL2204016 | ○ | 32 | 40 | 22 | TN..1604.. |
| PSC40DTJNR2705016 | ○ | 40 | 50 | 27 | TN..1604.. |
| PSC40DTJNL2705016 | ○ | 40 | 50 | 27 | TN..1604.. |
| PSC50DTJNR3506016 | ○ | 50 | 60 | 35 | TN..1604.. |
| PSC50DTJNL3506016 | ○ | 50 | 60 | 35 | TN..1604.. |
| PSC63DTJNR4506516 | ○ | 63 | 65 | 45 | TN..1604.. |
| PSC63DTJNL4506516 | ○ | 63 | 65 | 45 | TN..1604.. |

Spare Parts / Ersatzteile

| Part number / Bestell-Nr. | Screw for clamp / Schraube für Pratze | Shim / Unterlage | Wrench / Schlüssel | Clamp / Pratze | Screw for shim / Schraube für Unterlage | Spring / Feder |
|---------------------------|---|---------------------|-----------------------|-------------------|---|-------------------|
| | CM5x22C | T16BM | WH30L | C1RA | SM5x8.65XA1 | SPR6 |

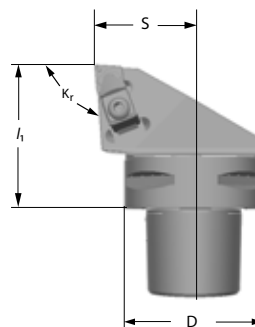
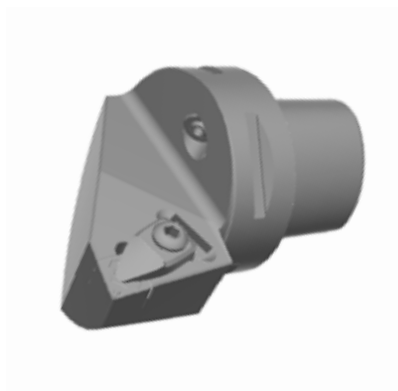
● Ex Stock / ab Lager ○ On demand / auf Anfrage

PSC-Tooling System

PSC-Tooling System · PSC-Werkzeuge

DCLNR/L Kr=95°

- Right hand style shown unless otherwise stated
- Rechter Drehhalter gezeigt sofern nicht anders angegeben



| Part number / Bestell-Nr. | Stock / Lager | Dimensions [mm] / Abmessungen [mm] | | | Insert / WSP |
|---------------------------|---------------|------------------------------------|----------------|----|--------------|
| | | D | I ₁ | S | |
| PSC32DCLNR2204512 | ○ | 32 | 45 | 22 | CN..1204.. |
| PSC32DCLNL2204512 | ○ | 32 | 45 | 22 | CN..1204.. |
| PSC40DCLNR2705012 | ○ | 40 | 50 | 27 | CN..1204.. |
| PSC40DCLNL2705012 | ○ | 40 | 50 | 27 | CN..1204.. |
| PSC50DCLNR3506012 | ● | 50 | 60 | 35 | CN..1204.. |
| PSC50DCLNL3506012 | ○ | 50 | 60 | 35 | CN..1204.. |
| PSC63DCLNR4506512 | ● | 63 | 65 | 45 | CN..1204.. |
| PSC63DCLNL4506512 | ● | 63 | 65 | 45 | CN..1204.. |
| PSC80DCLNR5508012 | ○ | 80 | 80 | 55 | CN..1204.. |
| PSC80DCLNL5508012 | ○ | 80 | 80 | 55 | CN..1204.. |

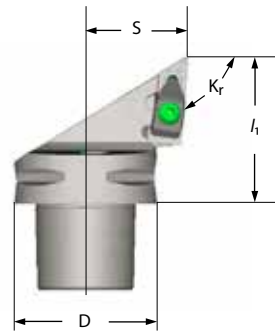
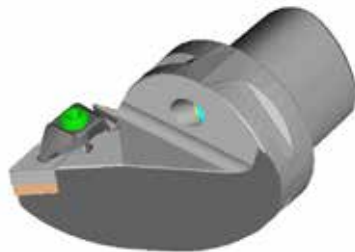
Spare Parts / Ersatzteile

| Part number / Bestell-Nr. | Screw for clamp / Schraube für Pratze | Shim / Unterlage | Wrench / Schlüssel | Clamp / Pratze | Screw for shim / Schraube für Unterlage | Spring / Feder |
|---------------------------|---|---------------------|-----------------------|-------------------|---|-------------------|
| | CM6x25C | C12BM | WH40L | C2RA | SM6x10XA1 | SPR4 |

● Ex Stock / ab Lager ○ On demand / auf Anfrage

DDJNR/L Kr=93°

- Left hand style shown unless otherwise stated
- Linker Drehalter gezeigt sofern nicht anders angegeben



| Part number / Bestell-Nr. | Stock / Lager | Dimensions [mm] / Abmessungen [mm] | | | Insert / WSP |
|---------------------------|---------------|------------------------------------|----------------|----|--------------|
| | | D | I ₁ | S | |
| PSC32DDJNR2204511 | ○ | 32 | 45 | 22 | DN..1104.. |
| PSC32DDJNL2204511 | ○ | 32 | 45 | 22 | DN..1104.. |
| PSC40DDJNR2705011 | ○ | 40 | 50 | 27 | DN..1104.. |
| PSC40DDJNL2705011 | ○ | 40 | 50 | 27 | DN..1104.. |
| PSC50DDJNR3506011 | ○ | 50 | 60 | 35 | DN..1104.. |
| PSC50DDJNL3506011 | ○ | 50 | 60 | 35 | DN..1104.. |
| PSC63DDJNR4506511 | ○ | 63 | 65 | 45 | DN..1104.. |
| PSC63DDJNL4506511 | ○ | 63 | 65 | 45 | DN..1104.. |

Spare Parts / Ersatzteile

| Part number / Bestell-Nr. | Screw for clamp / Schraube für Pratze | Shim / Unterlage | Wrench / Schlüssel | Clamp / Pratze | Screw for shim / Schraube für Unterlage | Spring / Feder |
|---------------------------|---|---------------------|-----------------------|-------------------|---|-------------------|
| | CM5x22C | D11BM | WH30L | C1RA | SM5x8.65XA1 | SPR6 |

| Part number / Bestell-Nr. | Stock / Lager | Dimensions [mm] / Abmessungen [mm] | | | Insert / WSP |
|---------------------------|---------------|------------------------------------|----------------|----|--------------|
| | | D | I ₁ | S | |
| PSC40DDJNR2705515 | ○ | 40 | 55 | 27 | DN..1506.. |
| PSC40DDJNL2705515 | ○ | 40 | 55 | 27 | DN..1506.. |
| PSC50DDJNR3506015 | ● | 50 | 60 | 35 | DN..1506.. |
| PSC50DDJNL3506015 | ● | 50 | 60 | 35 | DN..1506.. |
| PSC63DDJNR4506515 | ● | 63 | 65 | 45 | DN..1506.. |
| PSC63DDJNL4506515 | ● | 63 | 65 | 45 | DN..1506.. |

Spare Parts / Ersatzteile

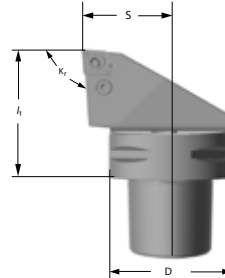
| Part number / Bestell-Nr. | Screw for clamp / Schraube für Pratze | Shim / Unterlage | Wrench / Schlüssel | Clamp / Pratze | Screw for shim / Schraube für Unterlage | Spring / Feder |
|---------------------------|---|---------------------|-----------------------|-------------------|---|-------------------|
| | CM6x22C | D15BM | WH40L | C2RA | SM6x10XA1 | SPR4 |

● Ex Stock / ab Lager ○ On demand / auf Anfrage

P-Holder · P-Halter

PCLNR/L Kr=95°

- Right hand style shown unless otherwise stated
- Rechter Drehhalter gezeigt sofern nicht anders angegeben



| Part number / Bestell-Nr. | Stock / Lager | Dimensions [mm] / Abmessungen [mm] | | | Insert / WSP |
|---------------------------|---------------|------------------------------------|----------------|----|--------------|
| | | D | I ₁ | S | |
| PSC32PCLNR2204012 | ○ | 32 | 40 | 22 | CN..1204.. |
| PSC32PCLNL2204012 | ○ | 32 | 40 | 22 | CN..1204.. |
| PSC40PCLNR2705012 | ○ | 40 | 50 | 27 | CN..1204.. |
| PSC40PCLNL2705012 | ● | 40 | 50 | 27 | CN..1204.. |
| PSC50PCLNR3506012 | ● | 50 | 60 | 35 | CN..1204.. |
| PSC50PCLNL3506012 | ● | 50 | 60 | 35 | CN..1204.. |
| PSC63PCLNR4506512 | ● | 63 | 65 | 45 | CN..1204.. |
| PSC63PCLNL4506512 | ● | 63 | 65 | 45 | CN..1204.. |
| PSC80PCLNR5508012 | ○ | 80 | 80 | 55 | CN..1204.. |
| PSC80PCLNL5508012 | ○ | 80 | 80 | 55 | CN..1204.. |

Spare Parts / Ersatzteile

| Part number / Bestell-Nr. | Screw / Schraube | Shim / Unterlage | Wrench / Schlüssel | Lever / Kniehebel | Shim Pin / Rohrstift |
|---------------------------|------------------|------------------|--------------------|-------------------|----------------------|
| | LEM8x21 | C12AP | WH30L | L4 | SP4 |

| Part number / Bestell-Nr. | Stock / Lager | Dimensions [mm] / Abmessungen [mm] | | | Insert / WSP |
|---------------------------|---------------|------------------------------------|----------------|----|--------------|
| | | D | I ₁ | S | |
| PSC40PCLNR2705016 | ○ | 40 | 50 | 27 | CN..1606.. |
| PSC40PCLNL2705016 | ○ | 40 | 50 | 27 | CN..1606.. |
| PSC50PCLNR3506016 | ● | 50 | 60 | 35 | CN..1606.. |
| PSC50PCLNL3506016 | ● | 50 | 60 | 35 | CN..1606.. |
| PSC63PCLNR4506516 | ● | 63 | 65 | 45 | CN..1606.. |
| PSC63PCLNL4506516 | ● | 63 | 65 | 45 | CN..1606.. |
| PSC80PCLNR5508016 | ● | 80 | 80 | 55 | CN..1606.. |
| PSC80PCLNL5508016 | ● | 80 | 80 | 55 | CN..1606.. |

Spare Parts / Ersatzteile

| Part number / Bestell-Nr. | Screw / Schraube | Shim / Unterlage | Wrench / Schlüssel | Lever / Kniehebel | Shim Pin / Rohrstift |
|---------------------------|------------------|------------------|--------------------|-------------------|----------------------|
| | LEM8x25 | C16AP | WH30L | L5 | SP5 |

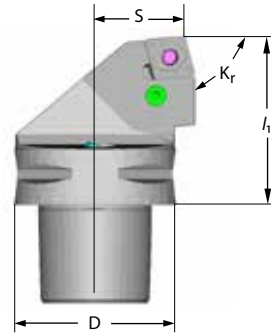
| Part number / Bestell-Nr. | Stock / Lager | Dimensions [mm] / Abmessungen [mm] | | | Insert / WSP |
|---------------------------|---------------|------------------------------------|----------------|----|--------------|
| | | D | I ₁ | S | |
| PSC50PCLNR3506019 | ● | 50 | 60 | 35 | CN..1906.. |
| PSC50PCLNL3506019 | ● | 50 | 60 | 35 | CN..1906.. |
| PSC63PCLNR4506519 | ● | 63 | 65 | 45 | CN..1906.. |
| PSC63PCLNL4506519 | ● | 63 | 65 | 45 | CN..1906.. |
| PSC80PCLNR5508019 | ● | 80 | 80 | 55 | CN..1906.. |
| PSC80PCLNL5508019 | ● | 80 | 80 | 55 | CN..1906.. |

Spare Parts / Ersatzteile

| Part number / Bestell-Nr. | Screw / Schraube | Shim / Unterlage | Wrench / Schlüssel | Lever / Kniehebel | Shim Pin / Rohrstift |
|---------------------------|------------------|------------------|--------------------|-------------------|----------------------|
| | LEM10x27 | C19AP | WH40L | L6 | SP6 |

PCRNRL/L Kr=75°

- Left hand style shown unless otherwise stated
- Linker Drehalter gezeigt sofern nicht anders angegeben



| Part number / Bestell-Nr. | Stock / Lager | Dimensions [mm] / Abmessungen [mm] | | | Insert / WSP |
|---------------------------|---------------|------------------------------------|----------------|----|--------------|
| | | D | I ₁ | S | |
| PSC50PCRNRL2706012 | ● | 50 | 60 | 27 | CN..1204.. |
| PSC50PCRNRL2706012 | ● | 50 | 60 | 27 | CN..1204.. |
| PSC63PCRNRL3506512 | ● | 63 | 65 | 35 | CN..1204.. |
| PSC63PCRNRL3506512 | ● | 63 | 65 | 35 | CN..1204.. |

Spare Parts / Ersatzteile

| Part number / Bestell-Nr. | Screw / Schraube | Shim / Unterlage | Wrench / Schlüssel | Lever / Kniehebel | Shim Pin / Rohrstift |
|---------------------------|------------------|------------------|--------------------|-------------------|----------------------|
| | LEM8x21 | C12AP | WH30L | L4 | SP4 |

| Part number / Bestell-Nr. | Stock / Lager | Dimensions [mm] / Abmessungen [mm] | | | Insert / WSP |
|---------------------------|---------------|------------------------------------|----------------|----|--------------|
| | | D | I ₁ | S | |
| PSC50PCRNRL2706016 | ● | 50 | 60 | 27 | CN..1606.. |
| PSC50PCRNRL2706016 | ● | 50 | 60 | 27 | CN..1606.. |
| PSC63PCRNRL3506516 | ● | 63 | 65 | 35 | CN..1606.. |
| PSC63PCRNRL3506516 | ● | 63 | 65 | 35 | CN..1606.. |

Spare Parts / Ersatzteile

| Part number / Bestell-Nr. | Screw / Schraube | Shim / Unterlage | Wrench / Schlüssel | Lever / Kniehebel | Shim Pin / Rohrstift |
|---------------------------|------------------|------------------|--------------------|-------------------|----------------------|
| | LEM8x25 | C16AP | WH30L | L5 | SP5 |

| Part number / Bestell-Nr. | Stock / Lager | Dimensions [mm] / Abmessungen [mm] | | | Insert / WSP |
|---------------------------|---------------|------------------------------------|----------------|----|--------------|
| | | D | I ₁ | S | |
| PSC50PCRNRL2706019 | ● | 50 | 60 | 27 | CN..1606.. |
| PSC50PCRNRL2706019 | ● | 50 | 60 | 27 | CN..1606.. |
| PSC63PCRNRL3506519 | ● | 63 | 65 | 35 | CN..1606.. |
| PSC63PCRNRL3506519 | ● | 63 | 65 | 35 | CN..1606.. |

Spare Parts / Ersatzteile

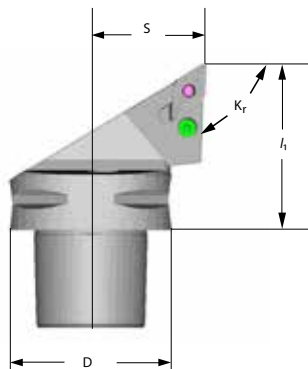
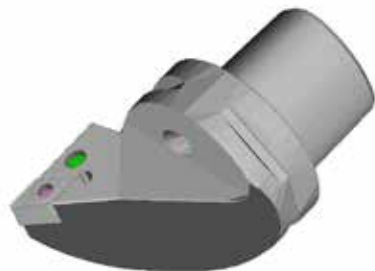
| Part number / Bestell-Nr. | Screw / Schraube | Shim / Unterlage | Wrench / Schlüssel | Lever / Kniehebel | Shim Pin / Rohrstift |
|---------------------------|------------------|------------------|--------------------|-------------------|----------------------|
| | LEM10x27 | C19AP | WH40L | L6 | SP6 |

PSC-Tooling System

PSC-Tooling System · PSC-Werkzeuge

PDJNR/L Kr=93°

- Left hand style shown unless otherwise stated
- Linker Drehalter gezeigt sofern nicht anders angegeben



| Part number / Bestell-Nr. | Stock / Lager | Dimensions [mm] / Abmessungen [mm] | | | Insert / WSP |
|---------------------------|---------------|------------------------------------|----------------|----|--------------|
| | | D | I ₁ | S | |
| PSC40PDJNR2705015 | ○ | 40 | 50 | 27 | DN..1506.. |
| PSC40PDJNL2705015 | ○ | 40 | 50 | 27 | DN..1506.. |
| PSC50PDJNR3506015 | ● | 50 | 60 | 35 | DN..1506.. |
| PSC50PDJNL3506015 | ● | 50 | 60 | 35 | DN..1506.. |
| PSC63PDJNR4506515 | ○ | 63 | 65 | 45 | DN..1506.. |
| PSC63PDJNL4506515 | ○ | 63 | 65 | 45 | DN..1506.. |

Spare Parts / Ersatzteile

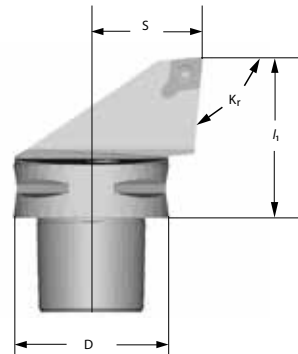
| Part number / Bestell-Nr. | Screw / Schraube | Shim / Unterlage | Wrench / Schlüssel | Lever / Kniehebel | Shim Pin / Rohrstift |
|---------------------------|------------------|------------------|--------------------|-------------------|----------------------|
| | LEM8x21 | D15AP | WH30L | L4B | SP4 |

● Ex Stock / ab Lager ○ On demand / auf Anfrage

S-Holder · S-Halter

SCLCR/L Kr=95°

- Left hand style shown unless otherwise stated
- Linker Drehhalter gezeigt sofern nicht anders angegeben



| Part number / Bestell-Nr. | Stock / Lager | Dimensions [mm] / Abmessungen [mm] | | | Insert / WSP |
|---------------------------|---------------|------------------------------------|----------------|----|--------------|
| | | D | I ₁ | S | |
| PSC32SCLCR2204009 | ○ | 32 | 40 | 22 | CC..09T3.. |
| PSC32SCLCL2204009 | ○ | 32 | 40 | 22 | CC..09T3.. |
| PSC40SCLCR2705009 | ○ | 40 | 50 | 27 | CC..09T3.. |
| PSC40SCLCL2705009 | ○ | 40 | 50 | 27 | CC..09T3.. |
| PSC50SCLCR3506009 | ○ | 50 | 60 | 35 | CC..09T3.. |
| PSC50SCLCL3506009 | ○ | 50 | 60 | 35 | CC..09T3.. |
| PSC63SCLCR4506509 | ○ | 63 | 65 | 45 | CC..09T3.. |
| PSC63SCLCL4506509 | ○ | 63 | 65 | 45 | CC..09T3.. |

Spare Parts / Ersatzteile

| Part number / Bestell-Nr. | Screw / Schraube | Wrench for Screw / Schlüssel für Schraube | Shim / Unterlage | Screw for shim / Schraube für Unterlage | Wrench for shim screw / Schlüssel für Unterlageschraube |
|---------------------------|------------------|---|------------------|---|---|
| | I60M3.5x8 | WT15IP | - | - | - |

| Part number / Bestell-Nr. | Stock / Lager | Dimensions [mm] / Abmessungen [mm] | | | Insert / WSP |
|---------------------------|---------------|------------------------------------|----------------|----|--------------|
| | | D | I ₁ | S | |
| PSC32SCLCR2204012 | ○ | 32 | 40 | 22 | CC..1204.. |
| PSC32SCLCL2204012 | ○ | 32 | 40 | 22 | CC..1204.. |
| PSC40SCLCR2705012 | ○ | 40 | 50 | 27 | CC..1204.. |
| PSC40SCLCL2705012 | ○ | 40 | 50 | 27 | CC..1204.. |
| PSC50SCLCR3506012 | ● | 50 | 60 | 35 | CC..1204.. |
| PSC50SCLCL3506012 | ● | 50 | 60 | 35 | CC..1204.. |
| PSC63SCLCR4506512 | ● | 63 | 65 | 45 | CC..1204.. |
| PSC63SCLCL4506512 | ● | 63 | 65 | 45 | CC..1204.. |

Spare Parts / Ersatzteile

| Part number / Bestell-Nr. | Screw / Schraube | Wrench for Screw / Schlüssel für Schraube | Shim / Unterlage | Screw for shim / Schraube für Unterlage | Wrench for shim screw / Schlüssel für Unterlageschraube |
|---------------------------|------------------|---|------------------|---|---|
| | I60M4x11X | WT15IP | C12BS | SM6*10XA | WH40L |

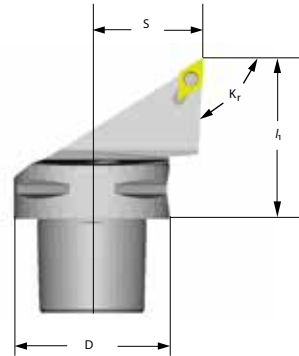
● Ex Stock / ab Lager ○ On demand / auf Anfrage

PSC-Tooling System

PSC-Tooling System · PSC-Werkzeuge

SDJCR/L Kr=93°

- Left hand style shown unless otherwise stated
- Linker Drehalter gezeigt sofern nicht anders angegeben



| Part number / Bestell-Nr. | Stock / Lager | Dimensions [mm] / Abmessungen [mm] | | | Insert / WSP |
|---------------------------|---------------|------------------------------------|----------------|----|--------------|
| | | D | I ₁ | S | |
| PSC40SDJCR2705011 | ○ | 40 | 50 | 27 | DC..11T3.. |
| PSC40SDJCL2705011 | ○ | 40 | 50 | 27 | DC..11T3.. |
| PSC50SDJCR3506011 | ● | 50 | 60 | 35 | DC..11T3.. |
| PSC50SDJCL3506011 | ● | 50 | 60 | 35 | DC..11T3.. |
| PSC63SDJCR4506511 | ● | 63 | 65 | 45 | DC..11T3.. |
| PSC63SDJCL4506511 | ● | 63 | 65 | 45 | DC..11T3.. |

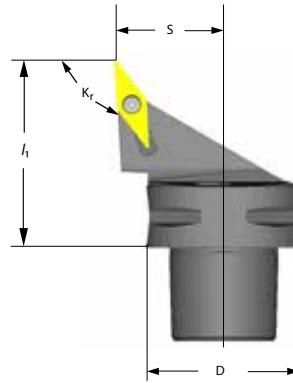
Spare Parts / Ersatzteile

| Part number / Bestell-Nr. | Screw / Schraube | Wrench for Screw / Schlüssel für Schraube | Shim / Unterlage | Screw for shim / Schraube für Unterlage | Wrench for shim screw / Schlüssel für Unterlageschraube |
|---------------------------|------------------|---|------------------|---|---|
| | I60M3.5x12 | WT15IP | D11BS | SM5x8.65XA | WH35L |

● Ex Stock / ab Lager ○ On demand / auf Anfrage

SVJBR/L Kr=93°

- Right hand style shown unless otherwise stated
- Rechter Drehalter gezeigt sofern nicht anders angegeben



| Part number / Bestell-Nr. | Stock / Lager | Dimensions [mm] / Abmessungen [mm] | | | Insert / WSP |
|---------------------------|---------------|------------------------------------|----------------|----|--------------|
| | | D | l ₁ | S | |
| PSC40SVJBR2705016 | ○ | 40 | 50 | 27 | VB..1604.. |
| PSC40SVJBL2705016 | ○ | 40 | 50 | 27 | VB..1604.. |
| PSC50SVJBR3506016 | ● | 50 | 60 | 35 | VB..1604.. |
| PSC50SVJBL3506016 | ● | 50 | 60 | 35 | VB..1604.. |
| PSC63SVJBR4506516 | ● | 63 | 65 | 45 | VB..1604.. |
| PSC63SVJBL4506516 | ● | 63 | 65 | 45 | VB..1604.. |

Spare Parts / Ersatzteile

| Part number / Bestell-Nr. | Screw / Schraube | Wrench for Screw / Schlüssel für Schraube | Shim / Unterlage | Screw for shim / Schraube für Unterlage | Wrench for shim screw / Schlüssel für Unterlageschraube |
|---------------------------|------------------|---|------------------|---|---|
| | I60M3.5x12 | WT15IP | V16BS | SM5x8.65XA | WH35L |

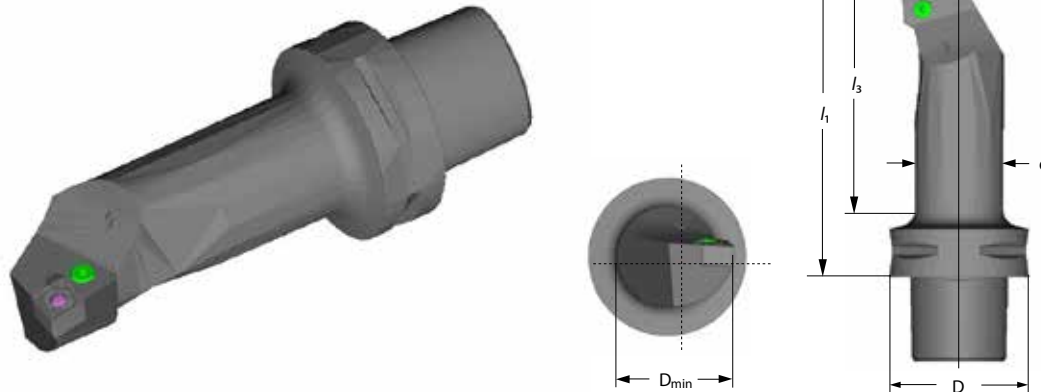
● Ex Stock / ab Lager ○ On demand / auf Anfrage

Internal Turning Tool Holder / Innendrehhalter

P-Holder · P-Halter

PCLNR/L Kr=95°

- Right hand style shown unless otherwise stated
- Rechter Drehhalter gezeigt sofern nicht anders angegeben



| Part number / Bestell-Nr. | Stock / Lager | Dimensions [mm] / Abmessungen [mm] | | | | | | Insert / WSP |
|---------------------------|---------------|------------------------------------|----|------|----------------|----------------|----|--------------|
| | | D | d | Dmin | I ₁ | I ₃ | S | |
| PSC40PCLNR1709012 | ○ | 40 | 25 | 32 | 90 | 69 | 17 | CN..1204.. |
| PSC40PCLNL1709012 | ○ | 40 | 25 | 32 | 90 | 69 | 17 | CN..1204.. |
| PSC50PCLNR2211012 | ● | 50 | 32 | 40 | 110 | 89 | 22 | CN..1204.. |
| PSC50PCLNL2211012 | ● | 50 | 32 | 40 | 110 | 89 | 22 | CN..1204.. |
| PSC63PCLNR2714012 | ● | 63 | 40 | 50 | 140 | 118 | 27 | CN..1204.. |
| PSC63PCLNL2714012 | ● | 63 | 40 | 50 | 140 | 118 | 27 | CN..1204.. |

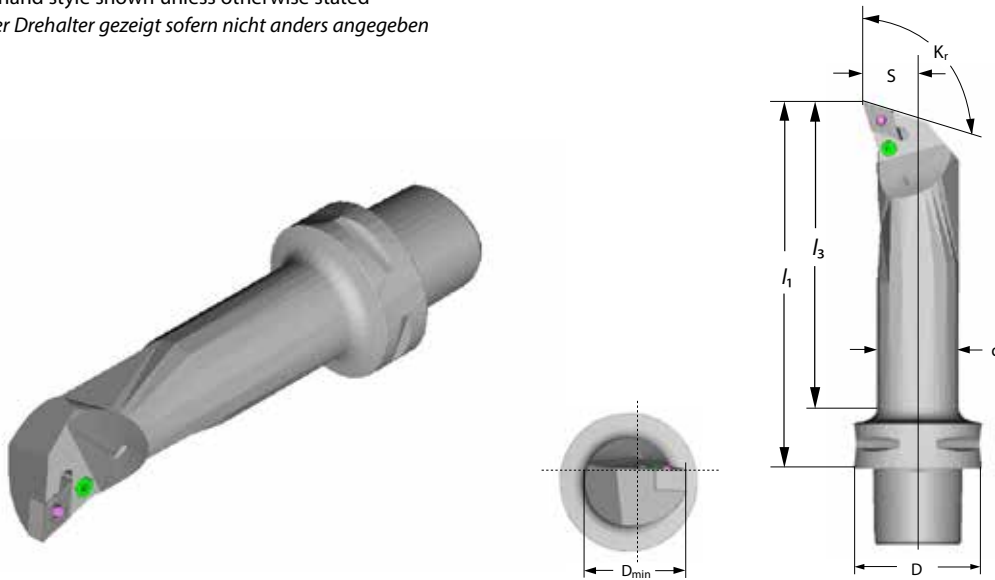
Spare Parts / Ersatzteile

| Part number / Bestell-Nr. | Screw / Schraube | Shim / Unterlage | Wrench / Schlüssel | Lever / Kniehebel | Shim Pin / Rohrstift |
|---------------------------|------------------|------------------|--------------------|-------------------|----------------------|
| | LEM8x21 | C12AP | WH30L | L4 | SP4 |

● Ex Stock / ab Lager ○ On demand / auf Anfrage

PDQNR/L Kr=107,5°

- Right hand style shown unless otherwise stated
- Rechter Drehalter gezeigt sofern nicht anders angegeben



| Part number / Bestell-Nr. | Stock / Lager | Dimensions [mm] / Abmessungen [mm] | | | | | | Insert / WSP |
|---------------------------|---------------|------------------------------------|----|------|----------------|----------------|----|--------------|
| | | D | d | Dmin | l ₁ | l ₃ | S | |
| PSC50PDQNR2714015 | ● | 63 | 40 | 50 | 140 | 118 | 27 | DN..1506.. |
| PSC50PDQNL2714015 | ● | 63 | 40 | 50 | 140 | 118 | 27 | DN..1506.. |
| PSC63PDQNR2211015 | ● | 63 | 40 | 50 | 180 | 158 | 27 | DN..1506.. |
| PSC63PDQNL2211015 | ● | 63 | 40 | 50 | 180 | 158 | 27 | DN..1506.. |

Spare Parts / Ersatzteile

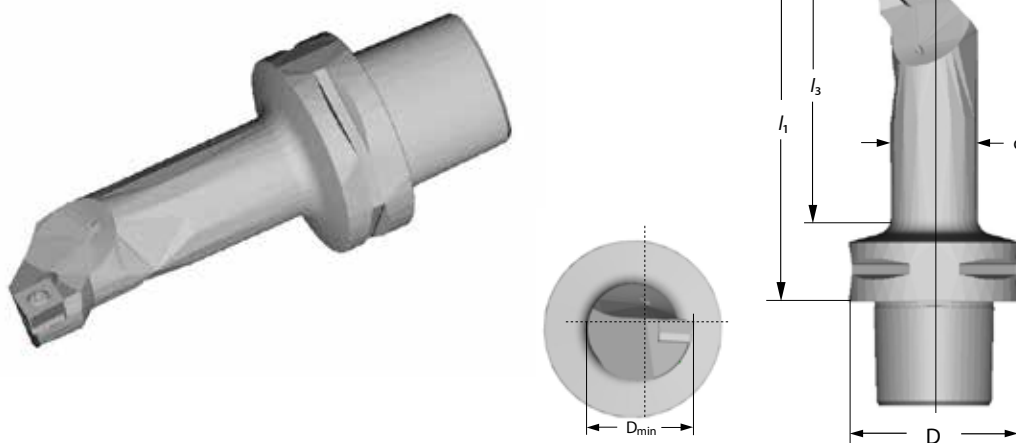
| Part number / Bestell-Nr. | Screw / Schraube | Shim / Unterlage | Wrench / Schlüssel | Lever / Kniehebel | Shim Pin / Rohrstift |
|---------------------------|------------------|------------------|--------------------|-------------------|----------------------|
| | LEM8x21 | D15AP | WH30L | L4B | SP4 |

● Ex Stock / ab Lager ○ On demand / auf Anfrage

S-Holder · S-Halter

SCLCR/L Kr=95°

- Right hand style shown unless otherwise stated
- Rechter Drehhalter gezeigt sofern nicht anders angegeben



| Part number / Bestell-Nr. | Stock / Lager | Dimensions [mm] / Abmessungen [mm] | | | | | | | Insert / WSP |
|---------------------------|---------------|------------------------------------|----|------|----------------|----------------|----|------------|--------------|
| | | D | d | Dmin | l ₁ | l ₃ | S | | |
| PSC40SCLCR1709012 | ○ | 40 | 25 | 32 | 90 | 69 | 17 | CC..1204.. | |
| PSC40SCLCL1709012 | ○ | 40 | 25 | 32 | 90 | 69 | 17 | CC..1204.. | |
| PSC40SCLCR2211012 | ○ | 40 | 32 | 40 | 110 | 89 | 22 | CC..1204.. | |
| PSC40SCLCL2211012 | ○ | 40 | 32 | 40 | 110 | 89 | 22 | CC..1204.. | |
| PSC50SCLCR2211012 | ● | 50 | 32 | 40 | 110 | 88 | 22 | CC..1204.. | |
| PSC50SCLCL2211012 | ● | 50 | 32 | 40 | 110 | 88 | 22 | CC..1204.. | |
| PSC63SCLCR2212512 | ● | 63 | 32 | 40 | 125 | 103 | 22 | CC..1204.. | |
| PSC63SCLCL2212512 | ● | 63 | 32 | 40 | 125 | 103 | 22 | CC..1204.. | |
| PSC63SCLCR2714012 | ● | 63 | 40 | 50 | 140 | 118 | 27 | CC..1204.. | |
| PSC63SCLCL2714012 | ● | 63 | 40 | 50 | 140 | 118 | 27 | CC..1204.. | |

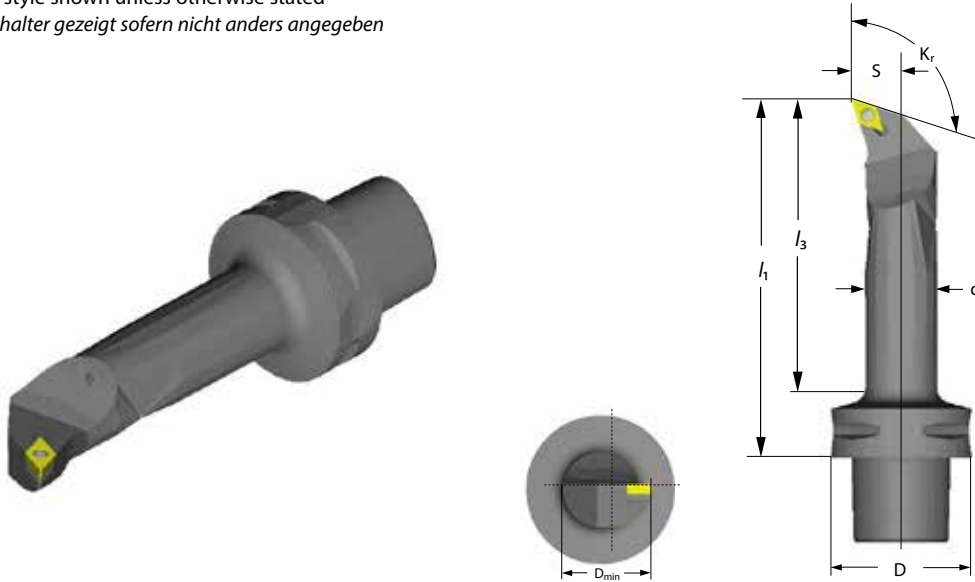
Spare Parts / Ersatzteile

| Part number / Bestell-Nr. | Screw / Schraube | Wrench for Screw / Schlüssel für Schraube | Shim / Unterlage | Screw for shim / Schraube für Unterlage | Wrench for shim screw / Schlüssel für Unterlagenschraube |
|---------------------------|------------------|---|------------------|---|--|
| | I60M4x11X | WT15IP | C12BS | SM6*10XA | WH40L |

● Ex Stock / ab Lager ○ On demand / auf Anfrage

SDQCR/L Kr=107,5°

- Right hand style shown unless otherwise stated
- Rechter Drehalter gezeigt sofern nicht anders angegeben



| Part number / Bestell-Nr. | Stock / Lager | Dimensions [mm] / Abmessungen [mm] | | | | | | Insert / WSP |
|---------------------------|---------------|------------------------------------|----|------|----------------|----------------|----|--------------|
| | | D | d | Dmin | l ₁ | l ₃ | S | |
| PSC40SDQCR1709011 | ○ | 40 | 25 | 32 | 90 | 69 | 17 | DC..11T3.. |
| PSC40SDQCL1709011 | ○ | 40 | 25 | 32 | 90 | 69 | 17 | DC..11T3.. |
| PSC50SDQCR1709011 | ● | 50 | 25 | 32 | 90 | 67 | 17 | DC..11T3.. |
| PSC50SDQCL1709011 | ● | 50 | 25 | 32 | 90 | 67 | 17 | DC..11T3.. |
| PSC50SDQCR2211011 | ● | 50 | 32 | 40 | 110 | 88 | 22 | DC..11T3.. |
| PSC50SDQCL2211011 | ● | 50 | 32 | 40 | 110 | 88 | 22 | DC..11T3.. |
| PSC63SDQCR2212511 | ● | 63 | 32 | 40 | 125 | 103 | 22 | DC..11T3.. |
| PSC63SDQCL2212511 | ● | 63 | 32 | 40 | 125 | 103 | 22 | DC..11T3.. |
| PSC63SDQCR2216011 | ● | 63 | 32 | 40 | 160 | 138 | 22 | DC..11T3.. |
| PSC63SDQCL2216011 | ● | 63 | 32 | 40 | 160 | 138 | 22 | DC..11T3.. |

Spare Parts / Ersatzteile

| Part number / Bestell-Nr. | Screw / Schraube | Wrench for Screw / Schlüssel für Schraube | Shim / Unterlage | Screw for shim / Schraube für Unterlage | Wrench for shim screw / Schlüssel für Unterlageschraube |
|---------------------------|------------------|---|------------------|---|---|
| | I60M3.5x12 | WT15IP | D11BS | SM5x8.65XA | WH35L |

● Ex Stock / ab Lager ○ On demand / auf Anfrage



Sales center in Europe:
Vertriebszentrale in Europa:

ZCC Cutting Tools Europe GmbH

www.zccct-europe.com www.zccct.com

Heltorfer Straße 12 40472 Düsseldorf, Germany

Tel.: +49(0)211-989240-0

Fax: +49(0)211-989240-111

E-mail: Info@zccct-europe.com



**Distributor
Vertretung**