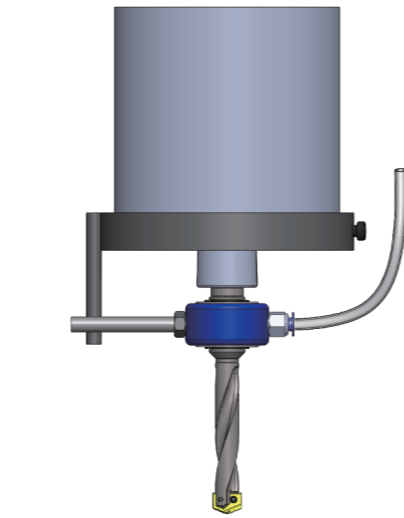
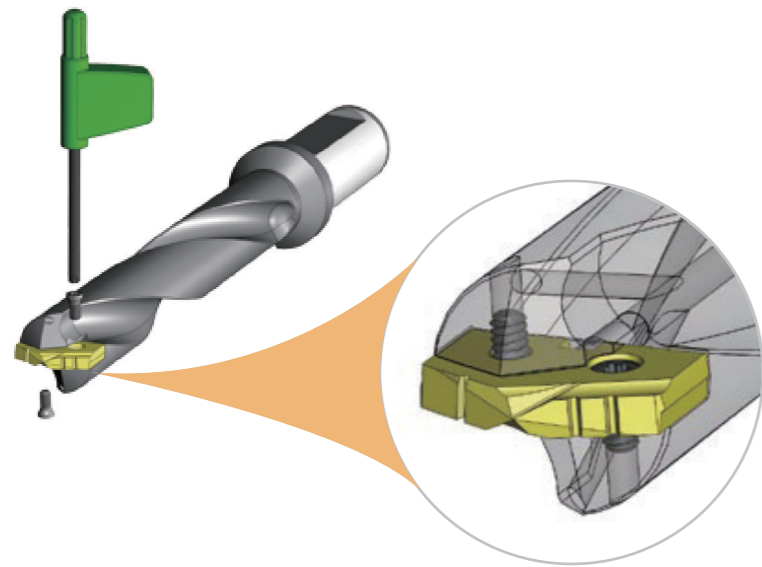
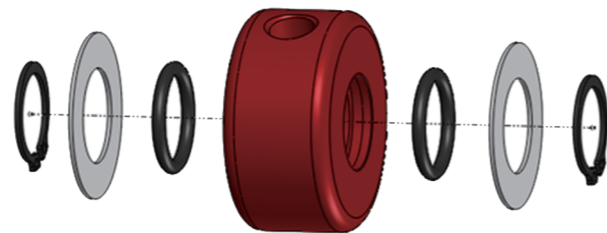
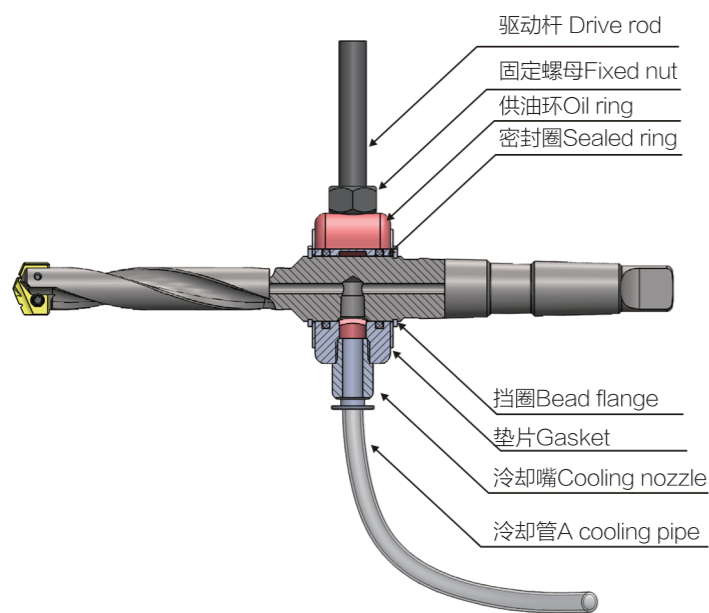


Instllation diagram  
安装示意图



普通钻床外冷转内冷示意图  
Diagram of outside cooling → inside cooling on drilling machine

Schematic diagram of oil ring assembly  
供油环装配示意图



供油环分解图  
Supply ring decopmsition of a graph

Method of use  
使用方法

准备 Preparations

为了提高钻头的效率，请将加工件牢固的固定在固定架上。在进行加工时，如果工件或者机器的刚性不足，可能会降低刀具的使用寿命，或者导致刀具破坏。

To increase the efficiency of Spade drill, workpieces must be fixed tightly on the fixing frame, In case of the workpieces or drilling machines are with poor rigidity, it will reduce the tool life of Spade drill or even damage Spade drill.

冷却液 Coolant

为了提高加工面的质量，延长工具的使用寿命，应该使用充分的冷却液，并且保持一定的压力。同时使用过滤器，尽量将50微米以上的杂物过滤掉。

Sufficient coolant supply & pressure is required to increase the quality of the surface of the workpieces and extend tool life, The size of solid particles in the coolant fluid should not exceed to micron Use coolant filtration to filter the solid particles exceed to micron.

注意点 Cautions

- 1、钻孔开始时与钻穿时，应降低进给速度，这样有助于提高钻孔的质量与刀具的寿命；
  - 2、当使用外部冷却液时，应降低切削速度，如果长径比超过3倍，内冷方式的作用会很明显；
  - 3、在遇到凹凸面、斜面、交叉孔时，需要降低切削速度与进给量，同时应采用尽量短的刀杆，或者改变钻尖的方式来满足；
  - 4、在扩孔时，在适当降低切削参数时，注意避开断屑槽最先切入工件；
  - 5、遇到工作刚性较差时，需加固工件，或者降低切削参数；
  - 6、钻孔过程中如遇切屑变色时，需加大冷却液流量或改善压力，也可降低切削参数减少切削热量；
  - 7、使用前检查螺钉的锁紧力，确保刀片支持可靠性；
  - 8、在刀刃完全磨损之前更换刀片，是可以获得刀杆的保护与刀片重磨的条件；
  - 9、应尽量选择短的刀杆，保证足够的机床功率与刚性；
- 1、 Use lower feed at the very beginning of drilling and at the moment of going through the holes, This will be helpful to increase the quality of holes and tool life of the Spade drill.
  - 2、 Use lower feed when adopting outer coolant supply, If the ratio between length and diameter exceeds 3 times, inner coolant supply will be quite effective.
  - 3、 When drilling roughness, slope, cross hole, you need to reduce the cutting speed and feed, At the same time, shorter holders are preferable, or choose different drill points.
  - 4、 When chamfering, reduce cutting parameters appropriately and avoid the chip-breaking grooves cut workpieces first.
  - 5、 If the rigidity of working condition is poor, tighten the workpieces or reduce cutting parameters.
  - 6、 If the color of chips changes during drilling, increase the coolant fluid and pressure, or reduce cutting parameters to be less heat.
  - 7、 Check whether the screws are locked tightly to be sure the reliability of insert clamping.
  - 8、 It is recommended to replace the insert before it is completely worn out, This can protect the holders, and the insert can be re-grinded.
  - 9、 Better to choose shorter holder, Ensure the machines are with good rigidity and high power.

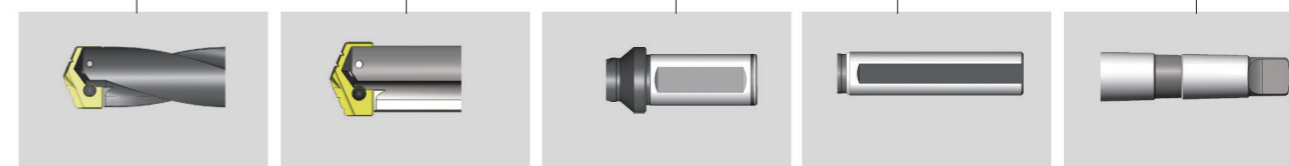
上述的注意点是其中的一部分，由于现场情况复杂多变，会遇到各种影响寿命、钻孔精度等问题，好在铲钻的刀片可以更换，可以灵活的改变刀片与刀杆来解决问题，我们欢迎与客户一起讨论钻孔技术，也期待能为您提高钻孔效率提供我们的技术与服务。

The above are the points to be noted, Applications on jobsites usually differ, You may meet various problem about tool life, accuracy of holes and so on, Thanks for the interchangeable inserts, which can solve problem by changing inserts and holders, We expect to discuss hole drilling technology with customers and provide our technology and service to customers in order to increase hole drilling efficiency.

The tool rods model description  
刀杆型号说明

S G S - Y0 - I K 016 - 10 N

S 大类 Big type	G 小类 Small type	S 槽形 Groove shape	Y0 接口代码 Connector code			I 公英制 Metric and Imperial	K 柄部类型 Shank type	016 刀柄直径 Holder diameter	10 长度 Length	N 表面处理 Coating
			接口 Connector	公制 Metric	英制 Imperia					
S-铲钻 Spade drill	G-刀杆 Holder	H-螺旋槽 Helical flute S-直槽 Straight flute	Y0	9.5~11	3/8"~27/64"	I-英制 imperia M-公制 Metric	K-侧固式法兰柄 K-Lateral fixation type flange shank  L-侧固式直柄 L-lateral fixation type straight shank  M-莫氏锥柄 M-Morse taper shank	016-16mm 020-20mm 032-32mm 040-40mm 075-3/4" 063-5/8" 125-1-1/4" 150-1-1/2" MT2-#2 MT3-#2 MT4-#4 MT5-#5	10-超短 Ultrashort series 20-短 Short series 30-中长 Intermediate series 40-标准 Standard series 50-延长 Extend length series 60-加长 Lengthening series 70-特长 Extra length series 90-超长 Overlength series	N-黑色 氧化处理 Oxidation treatment
			Z0	11.5~12.5	7/16"~1/2"					
			00	13~15.0	33/64"~19/32"					
			05	15.5~17.5	39/64"~11/16"					
			10	18~21.5	45/64"~55/64"					
			15	22~24	7/8"~15/16"					
			20	25~29	31/32"~1-5/32"					
			25	30~35	1-3/16"~1-3/8"					
			30	36~41	1-13/32"~1-5/8"					
			35	42~47	1-21/32"~1-7/8"					
			40	48~55	1-29/32"~2-3/16"					
			45	56~65	2-7/32"~2-9/16"					
			50	64~76	2-1/2"~3"					
			55	77~89	3-1/32"~3-1/2"					
70	90~101	3-17/32"~4"								
80	102~114	4-1/64"~4-1/2"								



螺旋槽  
Helical flute

直槽  
Straight flute

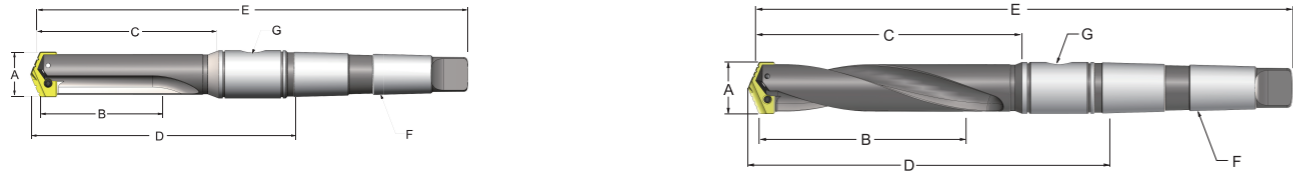
侧固式法兰柄  
Lateral fixation  
type flange shank

侧固式直柄  
Lateral fixation  
type straight shank

莫氏锥柄  
Morse taper shank

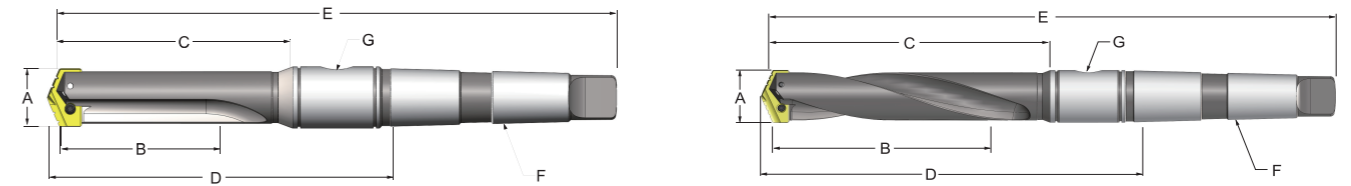


Cutting depth table of Taper shank series holder of spade drill (Metric)  
铲钻刀杆锥柄系列钻孔深度一览表(公制)



型号/直径 Type / Diameter		SGS锥柄系列 SGS Taper shank series				SGH锥柄系列 SGH Taper shank series				
接口 Connector	钻孔范围 Drill Insert Range	20系列 20 series	50系列 50 series	70系列 70 series	90系列 90 series	20系列 20 series	30系列 30 series	40系列 40 series	50系列 50 series	60系列 60 series
		B 有效钻孔深度(mm) Max.Drill Depth(mm)				B 有效钻孔深度(mm) Max.Drill Depth(mm)				
Y0	9.5 ~ 11.0	31.8	/	/	/	31.8	/	60.3	111.1	/
Z0	11.5 ~ 12.5	31.8	/	/	/	31.8	/	60.3	111.1	/
00	13.0 ~ 15.0	35.0	/	/	/	35.0	/	63.5	114.3	177.8
05	15.5 ~ 17.5	35.0	/	/	/	35.0	/	63.5	114.3	177.8
10	18.0 ~ 21.5	69.8	/	/	/	69.8	120.7	171.5	273.1	/
15	22.0 ~ 24.0	69.8	/	/	/	69.8	120.7	171.5	273.1	/
20	25.0 ~ 29.0	85.7	/	/	/	85.7	136.5	187.3	289.0	/
25	30.0 ~ 35.0	85.7	/	/	/	85.7	136.5	187.3	289.0	/
30	36.0 ~ 41.0	120.6	349.3	558.8	787.4	120.6	165.1	209.5	349.3	/
35	42.0 ~ 47.0	120.6	349.3	558.8	787.4	120.6	165.1	209.5	349.3	/
40	48.0 ~ 55.0	130.1	422.3	625.0	879.0	130.1	/	231.8	422.3	/
45	56.0 ~ 65.0	130.1	422.3	625.0	879.0	130.1	/	231.8	422.3	/
50	64.0 ~ 76.0	171.5	463.6	660.0	889.0	171.5	/	273.1	463.6	/
55	77.0 ~ 89.0	171.5	463.6	660.0	889.0	171.5	/	273.1	463.6	/
70	90.0 ~ 101.0	171.5	555.6	685.0	939.0	171.5	/	273.1	555.6	/
80	102.0 ~ 114.0	171.5	555.6	685.0	939.0	171.5	/	273.1	555.6	/

Cutting depth table of Taper shank series holder of spade drill(imperial)  
铲钻刀杆锥柄系列钻孔深度一览表(英制)



型号/直径 Type / Diameter		SGS锥柄系列 SGS Taper shank series					SGH锥柄系列 SGH Taper shank series				
接口 Connector	钻孔范围 Drill Insert Range	20系列 20 series	30系列 30 series	40系列 40 series	50系列 50 series	70系列 70 series	90系列 90 series	30系列 30 series	40系列 40 series	50系列 50 series	60系列 60 series
		B 有效钻孔深度(mm) Max.Drill Depth(mm)					B 有效钻孔深度(mm) Max.Drill Depth(mm)				
Y0	3/8" ~ 27/64"	1-1/4"	/	2-3/8"	4-3/8"	/	/	/	2-3/8"	4-3/8"	/
Z0	7/16" ~ 1/2"	1-1/4"	/	2-3/8"	4-3/8"	/	/	/	2-3/8"	4-3/8"	/
00	33/64" ~ 19/32"	1-3/8"	/	2-1/2"	4-1/2"	/	/	/	2-1/2"	4-1/2"	7"
05	39/64" ~ 11/16"	1-3/8"	/	2-1/2"	4-1/2"	/	/	/	2-1/2"	4-1/2"	7"
10	45/64" ~ 55/64"	2-3/4"	4-3/4"	6-3/4"	10-3/4"	/	/	4-3/4"	6-3/4"	10-3/4"	/
15	7/8" ~ 15/16"	2-3/4"	4-3/4"	6-3/4"	10-3/4"	/	/	4-3/4"	6-3/4"	10-3/4"	/
20	31/32" ~ 1-5/32"	3-3/8"	5-3/8"	7-3/8"	11-3/8"	/	/	5-3/8"	7-3/8"	11-3/8"	/
25	1-3/16" ~ 1-3/8"	3-3/8"	5-3/8"	7-3/8"	11-3/8"	/	/	5-3/8"	7-3/8"	11-3/8"	/
30	1-13/32" ~ 1-5/8"	4-3/4"	6-1/2"	8-1/4"	13-3/4"	22"	31"	/	/	/	/
35	1-21/32" ~ 1-7/8"	4-3/4"	6-1/2"	8-1/4"	13-3/4"	22"	31"	/	/	/	/
40	1-29/32" ~ 2-3/16"	5-1/8"	/	9-1/8"	16-5/8"	24-5/8"	34-5/8"	/	/	/	/
45	2-7/32" ~ 2-9/16"	5-1/8"	/	9-1/8"	16-5/8"	24-5/8"	34-5/8"	/	/	/	/
50	2-1/2" ~ 3"	6-3/4"	/	10-3/4"	18-1/4"	26"	35"	/	/	/	/
55	3-1/32" ~ 3-1/2"	6-3/4"	/	10-3/4"	18-1/4"	26"	35"	/	/	/	/
70	3-17/32" ~ 4"	6-3/4"	/	10-3/4"	21-7/8"	27"	37"	/	/	/	/
80	4-1/64" ~ 4-1/2"	6-3/4"	/	10-3/4"	21-7/8"	27"	37"	/	/	/	/

Cutting depth table of Lateral fixation type flange shank series of spade drill(Metric)  
铲钻刀杆侧固式法兰柄系列钻孔深度一览表(公制)



型号/直径 Type / Diameter		SGS侧固式法兰柄系列 SGS Lateral fixation type flange shank series					SGH侧固式法兰柄系列 SGH Lateral fixation type flange shank series			
接口 Connector	钻孔范围 Drill Insert Range	10系列 10 series	20系列 20 series	50系列 50 series	70系列 70 series	90系列 90 series	30系列 30 series	40系列 40 series	50系列 50 series	60系列 60 series
		B 有效钻孔深度(mm) Max.Drill Depth(mm)					B 有效钻孔深度(mm) Max.Drill Depth(mm)			
Y0	9.5 ~ 11.0	19.1	31.8	/	222.0	290.0	/	60.3	111.1	/
Z0	11.5 ~ 12.5	19.1	31.8	/	222.0	290.0	/	60.3	111.1	/
00	13.0 ~ 15.0	22.2	34.9	/	295.0	387.0	/	63.5	114.3	177.8
05	15.5 ~ 17.5	22.2	34.9	/	295.0	387.0	/	63.5	114.3	177.8
10	18.0 ~ 21.5	47.6	66.7	/	457.0	569.0	117.5	168.3	269.9	/
15	22.0 ~ 24.0	47.6	66.7	/	457.0	569.0	117.5	168.3	269.9	/
20	25.0 ~ 29.0	57.2	85.7	/	511.0	692.0	136.5	187.3	289.9	/
25	30.0 ~ 35.0	57.2	85.7	/	511.0	692.0	136.5	187.3	289.9	/
30	36.0 ~ 41.0	76.2	120.7	349.3	558.8	787.4	165.1	209.6	/	/
35	42.0 ~ 47.0	76.2	120.7	349.3	558.8	787.4	165.1	209.6	/	/
40	48.0 ~ 55.0	/	130.2	422.3	625.0	879.0	/	231.8	/	/
45	56.0 ~ 65.0	/	130.2	422.3	625.0	879.0	/	231.8	/	/
50	64.0 ~ 76.0	/	/	/	/	/	/	/	/	/
55	77.0 ~ 89.0	/	/	/	/	/	/	/	/	/
70	90.0 ~ 101.0	/	/	/	/	/	/	/	/	/
80	102.0 ~ 114.0	/	/	/	/	/	/	/	/	/

Cutting depth table of Lateral fixation type flange shank series of spade drill (imperial)  
铲钻刀杆侧固式法兰柄系列钻孔深度一览表(英制)



型号/直径 Type / Diameter		SGS侧固式法兰柄系列 SGS Lateral fixation type flange shank series					SGH侧固式法兰柄系列 SGH Lateral fixation type flange shank series			
接口 Connector	钻孔范围 Drill Insert Range	10系列 10 series	20系列 20 series	50系列 50 series	70系列 70 series	90系列 90 series	30系列 30 series	40系列 40 series	50系列 50 series	60系列 60 series
		B 有效钻孔深度(mm) Max.Drill Depth(mm)					B 有效钻孔深度(mm) Max.Drill Depth(mm)			
Y0	3/8" ~ 27/64"	3/4"	1-1/4"	/	2-3/8"	4-3/8"	/	2-3/8"	4-3/8"	/
Z0	7/16" ~ 1/2"	3/4"	1-1/4"	/	2-3/8"	4-3/8"	/	2-3/8"	4-3/8"	/
00	33/64" ~ 19/32"	7/8"	1-3/8"	/	2-1/2"	4-1/2"	/	2-1/2"	4-1/2"	7"
05	39/64" ~ 11/16"	7/8"	1-3/8"	/	2-1/2"	4-1/2"	/	2-1/2"	4-1/2"	7"
10	45/64" ~ 55/64"	1-7/8"	2-5/8"	4-5/8"	6-5/8"	10-5/8"	4-5/8"	6-5/8"	10-5/8"	/
15	7/8" ~ 15/16"	2-1/4"	2-5/8"	4-5/8"	6-5/8"	10-5/8"	4-5/8"	6-5/8"	10-5/8"	/
20	31/32" ~ 1-5/32"	2-1/4"	3-3/8"	5-3/8"	7-3/8"	11-3/8"	5-3/8"	7-3/8"	11-3/8"	/
25	1-3/16" ~ 1-3/8"	3-5/8"	3-3/8"	5-3/8"	7-3/8"	11-3/8"	5-3/8"	7-3/8"	11-3/8"	/
30	1-13/32" ~ 1-5/8"	3"	4-3/4"	6-1/2"	8-1/4"	/	6-1/2"	8-1/4"	/	/
35	1-21/32" ~ 1-7/8"	3"	4-3/4"	6-1/2"	8-1/4"	/	6-1/2"	8-1/4"	/	/
40	1-29/32" ~ 2-3/16"	/	5-1/8"	/	9-1/8"	/	/	9-1/8"	/	/
45	2-7/32" ~ 2-9/16"	/	5-1/8"	/	9-1/8"	/	/	9-1/8"	/	/
50	2-1/2" ~ 3"	/	/	/	/	/	/	/	/	/
55	3-1/32" ~ 3-1/2"	/	/	/	/	/	/	/	/	/
70	3-17/32" ~ 4"	/	/	/	/	/	/	/	/	/
80	4-1/64" ~ 4-1/2"	/	/	/	/	/	/	/	/	/





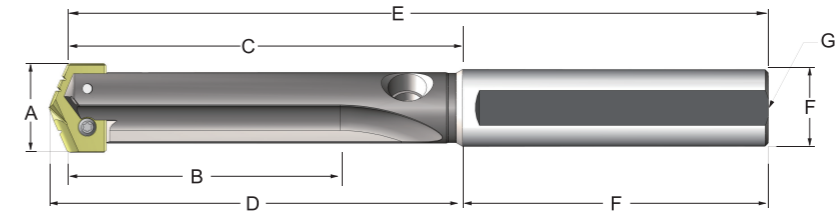








The lateral fixation type flange shank and helical flute holder (imperial)  
侧固式法兰柄螺旋槽刀杆 (英制)

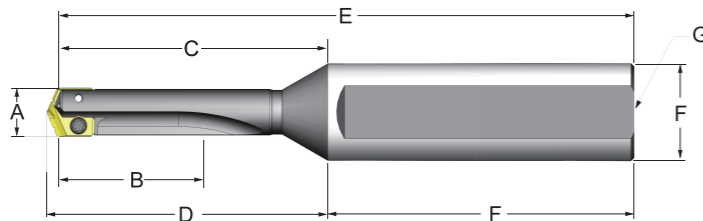


40 系列 (标准) / 40 series (Standard Length)											
接口 Connector	刀杆型号 Type	A Drill Insert Range	B Max.Drill Depth	C Body Length	D Ref.Length	E Overall Length	F Shank		G Pipe Tap		
							Dia.	Length			
Y0	SGH-Y0-IL075-40N	3/8"~27/64"	2-3/8"	3-17/32"	3-5/8"	5-9/16"	3/4"	2-1/32"	1/8"	2102047	2502018
Z0	SGH-Z0-IL075-40N	7/16"~1/2"	2-3/8"	3-17/32"	3-5/8"	5-9/16"	3/4"	2-1/32"	1/8"	2102048	2502018
00	SGH-00-IL075-40N	33/64"~19/32"	2-1/2"	3-5/8"	3-47/64"	5-21/32"	3/4"	2-1/32"	1/8"	2102046	2502017
05	SGH-05-IL075-40N	39/64"~11/16"	2-1/2"	3-5/8"	3-47/64"	5-21/32"	3/4"	2-1/32"	1/8"	2102046	2502017
10	SGH-10-IL100-40N	45/64"~55/64"	6-5/8"	8-3/32"	8-15/64"	10-3/8"	1"	2-9/32"	1/8"	2102049	2502016
15	SGH-15-IL100-40N	7/8"~15/16"	6-5/8"	8-3/32"	8-15/64"	10-3/8"	1"	2-9/32"	1/8"	2102049	2502016
20	SGH-20-IL125-40N	31/32"~1-5/32"	7-3/8"	9-1/16"	9-13/64"	11-11/32"	1-1/4"	2-9/32"	1/4"	2102045	2502020
25	SGH-25-IL125-40N	1-3/16"~1-3/8"	7-3/8"	9-1/16"	9-13/64"	11-11/32"	1-1/4"	2-9/32"	1/4"	2102045	2502020
30	SGH-30-IL150-40N	1-13/32"~1-5/8"	8-1/4"	10-5/16"	10-1/2"	13"	1-1/2"	2-11/16"	1/4"	2102044	2502015
35	SGH-35-IL150-40N	1-21/32"~1-7/8"	8-1/4"	10-5/16"	10-1/2"	13"	1-1/2"	2-11/16"	1/4"	2102044	2502015
40	SGH-40-IL150-40N	1-29/32"~2-3/16"	9-1/8"	11-1/16"	11-1/4"	13-3/4"	1-1/2"	2-11/16"	1/4"	2102044	2502015
45	SGH-45-IL150-40N	2-7/32"~2-9/16"	9-1/8"	11-1/16"	11-1/4"	13-3/4"	1-1/2"	2-11/16"	1/4"	2102044	2502015

50 系列 (延长) / 50 Series (Extended Length)											
接口 Connector	刀杆型号 Type	A Drill Insert Range	B Max.Drill Depth	C Body Length	D Ref.Length	E Overall Length	F Shank		G Pipe Tap		
							Dia.	Length			
Y0	SGH-Y0-IL075-50N	3/8"~27/64"	4-3/8"	5-17/32"	5-5/8"	7-9/16"	3/4"	2-1/32"	1/8"	2102047	2502018
Z0	SGH-Z0-IL075-50N	7/16"~1/2"	4-3/8"	5-17/32"	5-5/8"	7-9/16"	3/4"	2-1/32"	1/8"	2102048	2502018
00	SGH-00-IL075-50N	33/64"~19/32"	4-1/2"	5-5/8"	5-47/64"	7-21/32"	3/4"	2-1/32"	1/8"	2102046	2502017
05	SGH-05-IL075-50N	39/64"~11/16"	4-1/2"	5-5/8"	5-47/64"	7-21/32"	3/4"	2-1/32"	1/8"	2102046	2502017
10	SGH-10-IL100-50N	45/64"~55/64"	10-5/8"	12-3/32"	12-15/64"	14-3/8"	1"	2-9/32"	1/8"	2102049	2502016
15	SGH-15-IL100-50N	7/8"~15/16"	10-5/8"	12-3/32"	12-15/64"	14-3/8"	1"	2-9/32"	1/8"	2102049	2502016
20	SGH-20-IL125-50N	31/32"~1-5/32"	11-3/8"	13-1/16"	13-13/64"	15-11/32"	1-1/4"	2-9/32"	1/4"	2102045	2502020
25	SGH-25-IL125-50N	1-3/16"~1-3/8"	11-3/8"	13-1/16"	13-13/64"	15-11/32"	1-1/4"	2-9/32"	1/4"	2102045	2502020

60 系列 (加长) / 60 series (Long Length)											
接口 Connector	刀杆型号 Type	A Drill Insert Range	B Max.Drill Depth	C Body Length	D Ref.Length	E Overall Length	F Shank		G Pipe Tap		
							Dia.	Length			
00	SGH-00-IL075-60N	33/64"~19/32"	7"	8-1/8"	8-15/64"	10-5/32"	3/4"	2-1/32"	1/8"	2102046	2502017
05	SGH-05-IL075-60N	39/64"~11/16"	7"	8-1/8"	8-15/64"	10-5/32"	3/4"	2-1/32"	1/8"	2102046	2502017

The lateral fixation type straight shank and straight flute holder (imperial)  
侧固式直柄直槽刀杆 (英制)



20 系列 (短) / 20 Series (Short)											
接口 Connector	刀杆型号 Type	A Drill Insert Range	B Max.Drill Depth	C Body Length	D Ref.Length	E Overall Length	F Shank		G Pipe Tap		
							Dia.	Length			
Y0	SGS-Y0-IL075-20N	3/8"~27/64"	1-1/4"	2-1/32"	2-1/8"	4-13/32"	3/4"	2-3/8"	1/8"	2102047	2502018
Z0	SGS-Z0-IL075-20N	7/16"~1/2"	1-1/4"	2-1/32"	2-1/8"	4-13/32"	3/4"	2-3/8"	1/8"	2102048	2502018
00	SGS-00-IL075-20N	33/64"~19/32"	1-3/8"	2-3/16"	2-19/64"	4-9/16"	3/4"	2-3/8"	1/8"	2102046	2502017
05	SGS-05-IL075-20N	39/64"~11/16"	1-3/8"	2-3/16"	2-19/64"	4-9/16"	3/4"	2-3/8"	1/8"	2102046	2502017

20 系列 (短) / 20 Series (Short)											
接口 Connector	刀杆型号 Type	A Drill Insert Range	B Max.Drill Depth	C Body Length	D Ref.Length	E Overall Length	F Shank		G Pipe Tap		
							Dia.	Length			
10	SGS-10-IL075-20N	45/64"~55/64"	2-5/8"	3-7/8"	4-1/64"	6-7/8"	3/4"	3"	1/8"	2102049	2502016
10	SGS-10-IL100-20N	45/64"~55/64"	2-5/8"	3-7/8"	4-1/64"	6-7/8"	1"	3"	1/8"	2102049	2502016
15	SGS-15-IL075-20N	7/8"~15/16"	2-5/8"	3-7/8"	4-1/64"	6-7/8"	3/4"	3"	1/8"	2102049	2502016
15	SGS-15-IL100-20N	7/8"~15/16"	2-5/8"	3-7/8"	4-1/64"	6-7/8"	1"	3"	1/8"	2102049	2502016
20	SGS-20-IL100-20N	31/32"~1-5/32"	3-3/8"	4-1/2"	4-41/64"	8"	1"	3-1/2"	1/8"	2102045	2502020
20	SGS-20-IL125-20N	31/32"~1-5/32"	3-3/8"	4-1/2"	4-41/64"	8"	1-1/4"	3-1/2"	1/8"	2102045	2502020
25	SGS-25-IL100-20N	1-3/16"~1-3/8"	3-3/8"	4-1/2"	4-41/64"	8"	1"	3-1/2"	1/8"	2102045	2502020
25	SGS-25-IL125-20N	1-3/16"~1-3/8"	3-3/8"	4-1/2"	4-41/64"	8"	1-1/4"	3-1/2"	1/8"	2102045	2502020
30	SGS-30-IL125-20N	1-13/32"~1-5/8"	4-3/4"	6"	6-3/16"	10"	1-1/4"	4"	1/4"	2102044	2502015
30	SGS-30-IL150-20N	1-13/32"~1-5/8"	4-3/4"	6"	6-3/16"	10"	1-1/2"	4"	1/4"	2102044	2502015
35	SGS-35-IL125-20N	1-21/32"~1-7/8"	4-3/4"	6"	6-3/16"	10"	1-1/4"	4"	1/4"	2102044	2502015
35	SGS-35-IL150-20N	1-21/32"~1-7/8"	4-3/4"	6"	6-3/16"	10"	1-1/2"	4"	1/4"	2102044	2502015
40	SGS-40-IL150-20N	1-29/32"~2-3/16"	5-1/8"	6-1/2"	6-11/16"	10-1/2"	1-1/2"	4"	1/4"	2102044	2502015
40	SGS-40-IL175-20N	1-29/32"~2-3/16"	5-1/8"	6-1/2"	6-11/16"	10-1/2"	1-3/4"	4"	1/4"	2102044	2502015
45	SGS-45-IL150-20N	2-7/32"~2-9/16"	5-1/8"	6-1/2"	6-11/16"	10-3/4"	1-1/2"	4"	1/4"	2102044	2502015
45	SGS-45-IL175-20N	2-7/32"~2-9/16"	5-1/8"	6-1/2"	6-11/16"	10-3/4"	1-3/4"	4"	1/4"	2102044	2502015
50	SGS-50-IL200-20N	2-1/2"~3"	6-3/4"	8-1/2"	8-3/4"	12-1/2"	2"	4"	1/2"	2102043	2502019
55	SGS-55-IL200-20N	3-1/32"~3-1/2"	6-3/4"	8-1/2"	8-3/4"	12-1/2"	2"	4"	1/2"	2102043	2502019
70	SGS-70-IL300-20N	3-17/32"~4"	6-3/4"	8-7/8"	9-1/8"	13-7/8"	3"	5"	1/2"	2102043	2502019
80	SGS-80-IL300-20N	4-1/64"~4-1/2"	6-3/4"	8-7/8"	9-1/8"	13-7/8"	3"	5"	1/2"	2102043	2502019

30 系列 (中长) / 30 series (Intermediate Length)											
接口 Connector	刀杆型号 Type	A Drill Insert Range	B Max.Drill Depth	C Body Length	D Ref.Length	E Overall Length	F Shank		G Pipe Tap		
							Dia.	Length			
10	SGS-10-IL100-30N	45/64"~55/64"	4-5/8"	5-7/8"	6-1/64"	8-7/8"	1"	3"	1/8"	2102049	2502016
15	SGS-15-IL100-30N	7/8"~15/16"	4-5/8"	5-7/8"	6-1/64"	8-7/8"	1"	3"	1/8"	2102049	2502016
20	SGS-20-IL125-30N	31/32"~1-5/32"	5-3/8"	6-1/2"	6-41/64"	10"	1-1/4"	3-1/2"	1/8"	2102045	2502020
25	SGS-25-IL125-30N	1-3/16"~1-3/8"	5-3/8"	6-1/2"	6-41/64"	10"	1-1/4"	3-1/2"	1/8"	2102045	2502020
30	SGS-30-IL150-30N	1-13/32"~1-5/8"	6-1/2"	7-3/4"	7-15/16"	11-3/4"	1-1/2"	4"	1/4"	2102044	2502015

40 系列 (标准) / 40 series (Standard Length)											
接口 Connector	刀杆型号 Type	A Drill Insert Range	B Max.Drill Depth	C Body Length	D Ref.Length	E Overall Length	F Shank		G Pipe Tap		
							Dia.	Length			
Y0	SGS-Y0-IL075-40N	3/8"~27/64"	2-3/8"	3-5/32"	3-1/4"	5-17/32"	3/4"	2-3/8"	1/8"	2102047	2502018
Z0	SGS-Z0-IL075-40N	7/16"~1/2"	2-3/8"	3-5/32"	3-1/4"	5-17/32"	3/4"	2-3/8"	1/8"	2102048	2502018
00	SGS-00-IL075-40N	33/64"~19/32"	2-1/2"	3-5/16"	3-27/64"	5-11/16"	3/4"	2-3/8"	1/8"	2102046	2502017
05	SGS-05-IL075-40N	39/64"~11/16"	2-1/2"	3-5/16"	3-27/64"	5-11/16"	3/4"	2-3/8"	1/8"	2102046	2502017
10	SGS-10-IL075-40N	45/64"~55/64"	6-5/8"	7-7/8"	8-1/64"	10-7/8"	3/4"	3"	1/8"	2102049	2502016
10	SGS-10-IL100-40N	45/64"~55/64"	6-5/8"	7-7/8"	8-1/64"	10-7/8"	1"	3"	1/8"	2102049	2502016
15	SGS-15-IL075-40N	7/8"~15/16"	6-5/8"	7-7/8"	8-1/64"	10-7/8"	3/4"	3"	1/8"	2102049	2502016
15	SGS-15-IL100-40N	7/8"~15/16"	6-5/8"	7-7/8"	8-1/64"	10-7/8"	1"	3"	1/8"	2102049	2502016
20	SGS-20-IL100-40N	31/32"~1-5/32"	7-3/8"	8-1/2"	8-41/64"	12"	1"	3-1/2"	1/8"	2102045	2502020
20	SGS-20-IL125-40N	31/32"~1-5/32"	7-3/8"	8-1/2"	8-41/64"	12"	1-1/4"	3-1/2"	1/8"	2102045	2502020
25	SGS-25-IL100-40N	1-3/16"~1-3/8"	7-3/8"	8-1/2"	8-41/64"	12"	1"	3-1/2"	1/8"	2102045	2502020
25	SGS-25-IL125-40N	1-3/16"~1-3/8"	7-3/8"	8-1/2"	8-41/64"	12"	1-1/4"	3-1/2"	1/8"	2102045	2502020
30	SGS-30-IL125-40N	1-13/32"~1-5/8"	8-1/4"	9-1/2"	9-11/16"	13-1/2"	1-1/4"	4"	1/4"	2102044	2502015
30	SGS-30-IL150-40N	1-13/32"~1-5/8"	8-1/4"	9-1/2"	9-11/16"	13-1/2"	1-1/2"	4"	1/4"	2102044	2502015
35	SGS-35-IL125-40N	1-21/32"~1-7/8"	8-1/4"	9-1/2"	9-11/16"	13-1/2"	1-1/4"	4"	1/4"	2102044	2502015
35	SGS-35-IL150-40N	1-21/32"~1-7/8"	8-1/4"	9-1/2"	9-11/16"	13-1/2"	1-1/2"	4"	1/4"	2102044	2502015
40	SGS-40-IL150-40N	1-29/32"~2-3/16"	9-1/8"	10-1/2"	10-11/16"	14-1/2"	1-1/2"	4"	1/4"	2102044	2502015
40	SGS-40-IL175-40N	1-29/32"~2-3/16"	9-1/8"	10-1/2"	10-11/16"	14-1/2"	1-3/4"	4"	1/4"	2102044	2502015
45	SGS-45-IL150-40N	2-7/32"~2-9/16"	9-1/8"	10-1/2"	10-11/16"	14-1/2"	1-1/2"	4"	1/4"	2102044	2502015
45	SGS-45-IL175-40N	2-7/32"~2-9/16"	9-1/8"	10-1/2"	10-11/16"	14-1/2"	1-3/4"	4"	1/4"	2102044	2502015
50	SGS-50-IL200-40N	2-1/2"~3"	10-3/4"	12-1/2"	12-3/4"	16-1/2"	2"	4"	1/2"	2102043	2502019
55	SGS-55-IL200-40N										

The lateral fixation type straight shank and straight flute holder (imperial)  
侧固式直柄直槽刀杆 (英制)

50 系列 ( 延长 ) / 50 Series ( Extended Length )											
接口 Connector	刀杆型号 Type	A	B	C	D	E	F		G	Image 1	Image 2
		Drill Insert Range	Max. Drill Depth	Body Length	Ref.Length	Overall Length	Shank				
							Dia.	Length			
Y0	SGS-Y0-IL075-50N	3/8"~27/64"	4-3/8"	5-5/32"	5-1/4"	7-17/32"	3/4"	2-3/8"	1/8"	2102047	2502018
Z0	SGS-Z0-IL075-50N	7/16"~1/2"	4-3/8"	5-5/32"	5-1/4"	7-17/32"	3/4"	2-3/8"	1/8"	2102048	2502018
00	SGS-00-IL075-50N	33/64"~19/32"	4-1/2"	5-5/16"	5-27/64"	7-11/16"	3/4"	2-3/8"	1/8"	2102046	2502017
05	SGS-05-IL075-50N	39/64"~11/16"	4-1/2"	5-5/16"	5-27/64"	7-11/16"	3/4"	2-3/8"	1/8"	2102046	2502017
10	SGS-10-IL100-50N	45/64"~55/64"	10-5/8"	11-7/8"	12-1/64"	14-7/8"	1"	3"	1/8"	2102049	2502016
15	SGS-15-IL100-50N	7/8"~15/16"	10-5/8"	11-7/8"	12-1/64"	14-7/8"	1"	3"	1/8"	2102049	2502016
20	SGS-20-IL125-50N	31/32"~1-5/32"	11-3/8"	12-1/2"	12-41/64"	16"	1-1/4"	3-1/2"	1/8"	2102045	2502020
25	SGS-25-IL125-50N	1-3/16"~1-3/8"	11-3/8"	12-1/2"	12-41/64"	16"	1-1/4"	3-1/2"	1/8"	2102045	2502020
30	SGS-30-IL125-50N	1-13/32"~1-5/8"	13-3/4"	15"	15-3/16"	19"	1-1/4"	4"	1/4"	2102044	2502015
35	SGS-35-IL125-50N	1-21/32"~1-7/8"	13-3/4"	15"	15-3/16"	19"	1-1/4"	4"	1/4"	2102044	2502015
40	SGS-40-IL150-50N	1-29/32"~2-3/16"	16-5/8"	18"	18-3/16"	22"	1-1/2"	4"	1/4"	2102044	2502015
45	SGS-45-IL150-50N	2-7/32"~2-9/16"	16-5/8"	18"	18-3/16"	22"	1-1/2"	4"	1/4"	2102044	2502015
50	SGS-50-IL200-50N	2-1/2"~3"	18-1/4"	20"	20-1/4"	24"	2"	4"	1/2"	2102043	2502019
55	SGS-55-IL200-50N	3-1/32"~3-1/2"	18-1/4"	20"	20-1/4"	24"	2"	4"	1/2"	2102043	2502019
70	SGS-70-IL300-50N	3-17/32"~4"	21-7/8"	24"	24-1/4"	29"	3"	5"	1/2"	2102043	2502019

60 系列 ( 加长 ) / 60 series ( Long Length )											
接口 Connector	刀杆型号 Type	A	B	C	D	E	F		G	Image 1	Image 2
		Drill Insert Range	Max. Drill Depth	Body Length	Ref.Length	Overall Length	Shank				
							Dia.	Length			
00	SGS-00-IL075-60N	33/64"~19/32"	7"	7-13/16"	7-59/64"	10-3/16"	3/4"	2-3/8"	1/8"	2102046	2502017
05	SGS-05-IL075-60N	39/64"~11/16"	7"	7-13/16"	7-59/64"	10-3/16"	3/4"	2-3/8"	1/8"	2102046	2502017

70 系列 ( 特长 ) / 70 Series ( Extra Length )											
接口 Connector	刀杆型号 Type	A	B	C	D	E	F		G	Image 1	Image 2
		Drill Insert Range	Max. Drill Depth	Body Length	Ref.Length	Overall Length	Shank				
							Dia.	Length			
Y0	SGS-Y0-IL075-70N	3/8"~27/64"	8-3/8"	9-17/32"	9-5/8"	11-29/32"	3/4"	2-3/8"	1/8"	2102047	2502018
Z0	SGS-Z0-IL075-70N	7/16"~1/2"	8-3/4"	9-17/32"	9-5/8"	11-29/32"	3/4"	2-3/8"	1/8"	2102048	2502018
05	SGS-05-IL075-70N	39/64"~11/16"	11-5/8"	12-7/16"	12-35/64"	14-13/16"	3/4"	2-3/8"	1/8"	2102046	2502017
10	SGS-10-IL100-70N	45/64"~55/64"	18"	19-1/4"	19-25/64"	22-1/4"	1"	3"	1/8"	2102049	2502016
20	SGS-20-IL125-70N	31/32"~1-5/32"	20-1/8"	21-1/4"	21-25/64"	24-3/4"	1-1/4"	3-1/2"	1/8"	2102045	2502020
30	SGS-30-IL125-70N	1-13/32"~1-5/8"	22"	23-1/4"	23-7/16"	27-1/4"	1-1/2"	4"	1/4"	2102044	2502015
40	SGS-40-IL150-70N	1-29/32"~2-3/16"	24-5/8"	26"	26-3/16"	30"	1-1/2"	4"	1/4"	2102044	2502015
50	SGS-50-IL200-70N	2-1/2"~3"	26"	27-3/4"	28"	31-3/4"	2"	4"	1/2"	2102043	2502019
70	SGS-70-IL300-70N	3-17/32"~4"	27"	29-1/8"	29-3/8"	34-1/8"	3"	5"	1/2"	2102043	2502019

90 系列 ( 超长 ) / 90 Series ( Overlength )											
接口 Connector	刀杆型号 Type	A	B	C	D	E	F		G	Image 1	Image 2
		Drill Insert Range	Max. Drill Depth	Body Length	Ref.Length	Overall Length	Shank				
							Dia.	Length			
Y0	SGS-Y0-IL075-90N	3/8"~27/64"	11-7/16"	12-7/32"	12-5/16"	14-29/32"	3/4"	2-3/8"	1/8"	2102047	2502018
Z0	SGS-Z0-IL075-90N	7/16"~1/2"	11-7/16"	12-7/32"	12-5/16"	14-29/32"	3/4"	2-3/8"	1/8"	2102048	2502018
05	SGS-05-IL075-90N	39/64"~11/16"	15-1/4"	16-1/16"	16-11/64"	18-7/16"	3/4"	2-3/8"	1/8"	2102046	2502017
10	SGS-10-IL100-90N	45/64"~55/64"	22-1/4"	23-1/2"	23-41/64"	26-1/2"	1"	3"	1/8"	2102049	2502016
20	SGS-20-IL125-90N	31/32"~1-5/32"	27-1/4"	28-3/8"	28-33/64"	31-7/8"	1-1/4"	3-1/2"	1/8"	2102045	2502020
30	SGS-30-IL125-90N	1-13/32"~1-5/8"	31"	32-1/4"	32-7/16"	36-1/4"	1-1/2"	4"	1/4"	2102044	2502015
40	SGS-40-IL150-90N	1-29/32"~2-3/16"	34-5/8"	36"	36-3/16"	40"	1-1/2"	4"	1/4"	2102044	2502015
50	SGS-50-IL200-50N	2-1/2"~3"	35"	36-3/4"	37"	40-3/4"	2"	4"	1/2"	2102043	2502019
70	SGS-70-IL300-70N	3-17/32"~4"	37"	39-1/8"	39-3/8"	44-1/8"	3"	5"	1/2"	2102043	2502019



Description of insert model  
刀片型号说明

- 10材料（粉末高速钢）用于普通钢和铸铁的钻削
- 15材料（高性能粉末高速钢）用于高强度材料的钻削，如高镍合金
- 25材料（顶级性能粉末高速钢）用于难加工材料的钻削，如高温合金
- 10 materials (powder high speed steel) for drilling ordinary steel and cast iron.
- 15 materials (High performance powder high speed steel) for drilling high strength materials, such as high-nickel alloys.
- 25 materials (Top level performance powder high speed steel) for drilling difficult-to-machine material, such as high temperature alloy.

涂层 Coating	订货号 Number of order	涂层材料 Coating material
C100	XX-X-XXXX-XXT	TiN
C300	XX-X-XXXX-XXXA	TiAlN
C500	XX-X-XXXX-XXXH	专用的Special

S P - Y - I 0750 - 10 X A

S	P	Y			I	0750	10	X	A
大类 Big type	小类 Small type	接口代码 Connector code			公英制 Metric and Imperial	刀片直径 Insert diameter	材料 Material	几何 Geometry	涂层 Coat
S-铲钻 Spade drill	P-刀片 Insert	接口 Connector	公制 Metric	英制 Imperia	I-英制 imperia M-公制 Metric	0750-3/4" 0750-75mm	10-粉末高速钢 Powder HSS  15-高性能粉末 高速钢 High- performance powder HSS  25-顶级性能粉 末高速钢 Top-level powder HSS	X-标准几何 X-Standard geometry  W-多刃几何 S-Multi-edges geometry  H-阶梯刃几何 H-Step-edges geometry  P-平底几何 P-Flat-base geometry	H-C500 A-C300 T-C100
		Y	9.5~11.0	3/8"~27/64"					
		Z	11.5~12.5	7/16"~1/2"					
		0	13~17.5	33/64"~11/16"					
		1	18~24	45/64"~15/16"					
		2	25~35	31/32"~1-3/8"					
		3	36~47	1-13/32"~1-7/8"					
		4	48~65	1-29/32"~2-9/16"					
		5	64~76	2-1/2"~3"					
6	77~89	3-1/32"~3-1/2"							
7	90~100	3-17/32"~4"							
8	102~114	4-1/64"~4-1/2"							

**断屑槽**  
Chip breaker  
◦折断切削、易于排屑  
◦减小钻削扭矩

**固定螺丝孔**  
Fix screw holes  
◦安全可靠的装夹  
◦确保钻削过程中的稳定性  
◦Safe and reliable clamping  
◦Ensure the stability during drilling

**定位槽**  
Location groove  
◦保证径向的精度  
◦Ensure the accuracy of the radial direction

**分屑槽**  
Chip dividing groove  
◦减小切削宽度  
◦易于排屑  
◦减小钻削扭矩  
◦Reduce cutting width  
◦Better chip removal  
◦Reduce drilling torque

**倒角**  
Countersink  
◦增加刀片的强度  
◦减少外圆的磨损  
◦提高工件表面光洁度  
◦Increase the strength of insert  
◦Reduce the wear & tear of outer diameter  
◦Improve the smoothness on the surface of workpiece

**XR型横刃修磨**  
XR chisel edge regrinding  
◦提高刃口强度  
◦增强稳定性  
◦Improve the strength of cutting edges  
◦Increase the stability

**两个后刀面**  
Two back flank surface  
◦减少与工件的摩擦  
◦良好的自定心  
◦降低轴向阻力  
◦Reduce the friction with the workpiece  
◦Better self-centering  
◦Reduce the axial resistance

**钻芯**  
Core drilling  
◦钻芯薄与一般钻头产品相比降低20%的轴向阻力  
◦良好的自定心  
◦Thinner core drilling, which reduce 20% axial resistance compared with normal drilling products.  
◦Better self-centering

Insert-10 materials (Powder HSS)(Metric、imperial)  
刀片—10材料 (粉末高速钢) (公、英制)

- 用于普通钢和铸铁的钻削;
- 在设备上能够简单的更换刀片,可以减少调试时间;
- 采用XR型横刃修磨提高刃口强度、增强稳定性;
- 采用两个后刀面有效减少与工件的磨擦及较好的自定心;
- 相比一般钻头降低20%的轴向阻力;

- Apply for drilling normal steel and cast iron.
- Inserts can be replaced simply on the device, to reduce the debugging time.
- Using XR chisel edge grinding to improve edge strength, enhanced stability.
- Using two back flank surface to reduce friction with workpieces effectively, better self-centering.
- Comparing with general drill, it can reduce 20% of the axial resistance.

Insert-15 materials (Powder HSS)(Metric、imperial)  
刀片—15材料 (高性能粉末高速钢) (公、英制)

- 用于高强度材料的钻削, 如高镍合金;
- 在设备上能够简单的更换刀片,可以减少调试时间;
- 采用XR型横刃修磨提高刃口强度、增强稳定性;
- 采用两个后刀面有效减少与工件的磨擦及较好的自定心;
- 相比一般钻头降低20%的轴向阻力;

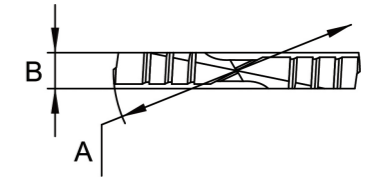
- Apply for drilling high strength materials, such as high-nickel alloys.
- Inserts can be replaced simply on the device, to reduce the debugging time.
- Using XR chisel edge grinding to improve edge strength, enhanced stability.
- Using two back flank surface to reduce friction with workpieces effectively, better self-centering.
- Compare with general drill, it can reduce 20% of the axial resistance.

Insert-25 materials (Powder HSS)(Metric、imperial)  
刀片—25材料 (顶级性能粉末高速钢) (公、英制)

- 用于难加工材料的钻削, 如高温合金;
- 在设备上能够简单的更换刀片,可以减少调试时间;
- 采用XR型横刃修磨提高刃口强度、增强稳定性;
- 采用两个后刀面有效减少与工件的磨擦及较好的自定心;
- 相比一般钻头降低20%的轴向阻力;

- Apply for drilling difficult-to-machine material, such as high temperature alloy.
- Inserts can be replaced simply on the device, to reduce the debugging time.
- Using XR chisel edge grinding to improve edge strength, enhanced stability.
- Using two back flank surface to reduce friction with the workpieces effectively, better self-centering.
- Compare with general drill, it can reduce 20% of the axial resistance.

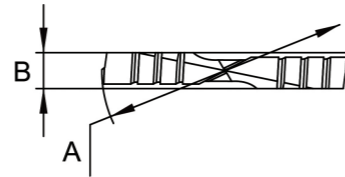
Insert table parameters (Metric)  
刀片参数 (公制)



接口 Connector	A直径 Diameter (mm)	B厚度 Thickness (mm/ inch)	10 (粉末高速钢) 10 (Powder HSS)	15 (高性能粉末高速钢) 15 (High-performance powder HSS)	25 (顶级性能粉末高速钢) 25 (Top-level powder HSS)
规格区间 (mm)			型号 Type	型号 Type	型号 Type
Y 9.5 to 11	9.50	2.38 (3/32")	--	--	SP-Y-M0095-25X*
	9.80		--	--	SP-Y-M0098-25X*
	10.00		--	--	SP-Y-M0100-25X*
	10.20		--	--	SP-Y-M0102-25X*
	10.50		--	--	SP-Y-M0105-25X*
	10.80		--	--	SP-Y-M0108-25X*
Z 11.5 to 12.5	11.00	2.38 (3/32")	--	--	SP-Y-M0110-25X*
	11.50		--	--	SP-Z-M0115-25X*
	12.00		--	--	SP-Z-M0120-25X*
0 13 to 17.5	12.50	3.18 (1/8")	--	--	SP-Z-M0125-25X*
	13.00		--	--	SP-0-M0130-25X*
	13.50		--	--	SP-0-M0135-25X*
	14.00		--	--	SP-0-M0140-25X*
	14.50		--	--	SP-0-M0145-25X*
	15.00		--	--	SP-0-M0150-25X*
	15.50		--	--	SP-0-M0155-25X*
	16.00		--	--	SP-0-M0160-25X*
	16.50		--	--	SP-0-M0165-25X*
	17.00		--	--	SP-0-M0170-25X*
1 18 to 24	17.50	3.97 (5/32")	--	--	SP-0-M0175-25X*
	18.00		SP-1-M0180-10X*	SP-1-M0180-15X*	SP-1-M0180-25X*
	18.50		SP-1-M0185-10X*	SP-1-M0185-15X*	SP-1-M0185-25X*
	19.00		SP-1-M0190-10X*	SP-1-M0190-15X*	SP-1-M0190-25X*
	19.50		SP-1-M0195-10X*	SP-1-M0195-15X*	SP-1-M0195-25X*
	20.00		SP-1-M0200-10X*	SP-1-M0200-15X*	SP-1-M0200-25X*
	20.50		SP-1-M0205-10X*	SP-1-M0205-15X*	SP-1-M0205-25X*
	21.00		SP-1-M0210-10X*	SP-1-M0210-15X*	SP-1-M0210-25X*
	22.00		SP-1-M0220-10X*	SP-1-M0220-15X*	SP-1-M0220-25X*
	23.00		SP-1-M0230-10X*	SP-1-M0230-15X*	SP-1-M0230-25X*
2 25 to 35	24.00	4.76 (3/16")	SP-1-M0240-10X*	SP-1-M0240-15X*	SP-1-M0240-25X*
	25.00		SP-2-M0250-10X*	SP-2-M0250-15X*	SP-2-M0250-25X*
	26.00		SP-2-M0260-10X*	SP-2-M0260-15X*	SP-2-M0260-25X*
	27.00		SP-2-M0270-10X*	SP-2-M0270-15X*	SP-2-M0270-25X*
	28.00		SP-2-M0280-10X*	SP-2-M0280-15X*	SP-2-M0280-25X*
	29.00		SP-2-M0290-10X*	SP-2-M0290-15X*	SP-2-M0290-25X*
	30.00		SP-2-M0300-10X*	SP-2-M0300-15X*	SP-2-M0300-25X*
	31.00		SP-2-M0310-10X*	SP-2-M0310-15X*	SP-2-M0310-25X*
	32.00		SP-2-M0320-10X*	SP-2-M0320-15X*	SP-2-M0320-25X*
	33.00		SP-2-M0330-10X*	SP-2-M0330-15X*	SP-2-M0330-25X*
3 36 to 47	34.00	6.35 (1/4")	SP-2-M0340-10X*	SP-2-M0340-15X*	SP-2-M0340-25X*
	35.00		SP-2-M0350-10X*	SP-2-M0350-15X*	SP-2-M0350-25X*
	36.00		SP-3-M0360-10X*	SP-3-M0360-15X*	SP-3-M0360-25X*
	37.00		SP-3-M0370-10X*	SP-3-M0370-15X*	SP-3-M0370-25X*
	38.00		SP-3-M0380-10X*	SP-3-M0380-15X*	SP-3-M0380-25X*
	39.00		SP-3-M0390-10X*	SP-3-M0390-15X*	SP-3-M0390-25X*
	40.00		SP-3-M0400-10X*	SP-3-M0400-15X*	SP-3-M0400-25X*
	41.00		SP-3-M0410-10X*	SP-3-M0410-15X*	SP-3-M0410-25X*
	42.00		SP-3-M0420-10X*	SP-3-M0420-15X*	SP-3-M0420-25X*
	43.00		SP-3-M0430-10X*	SP-3-M0430-15X*	SP-3-M0430-25X*
44.00	SP-3-M0440-10X*	SP-3-M0440-15X*	SP-3-M0440-25X*		
45.00	SP-3-M0450-10X*	SP-3-M0450-15X*	SP-3-M0450-25X*		
46.00	SP-3-M0460-10X*	SP-3-M0460-15X*	SP-3-M0460-25X*		
47.00	SP-3-M0470-10X*	SP-3-M0470-15X*	SP-3-M0470-25X*		

\* 涂层代码, 型号后面加涂层代码 C100=T C300=A C500=H

Insert table parameters (Metric)  
刀片参数 (公制)



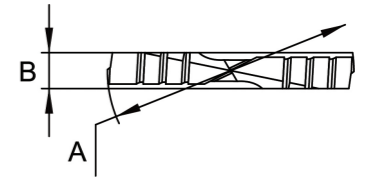
接口 Connector	A直径 Diameter (mm)	B厚度 Thickness (mm/inch)	10 (粉末高速钢) 10 (Powder HSS)	15 (高性能粉末高速钢) 15 (High-performance powder HSS)	25 (顶级性能粉末高速钢) 25 (Top-level powder HSS)
规格区间 (mm)			型号 Type	型号 Type	型号 Type
4 48 to 65	48.00	7.94 (5/16")	SP-4-M0480-10X*	SP-4-M0480-15X*	SP-4-M0480-25X*
	49.00		SP-4-M0490-10X*	SP-4-M0490-15X*	SP-4-M0490-25X*
	50.00		SP-4-M0500-10X*	SP-4-M0500-15X*	SP-4-M0500-25X*
	51.00		SP-4-M0510-10X*	SP-4-M0510-15X*	SP-4-M0510-25X*
	52.00		SP-4-M0520-10X*	SP-4-M0520-15X*	SP-4-M0520-25X*
	53.00		SP-4-M0530-10X*	SP-4-M0530-15X*	SP-4-M0530-25X*
	54.00		SP-4-M0540-10X*	SP-4-M0540-15X*	SP-4-M0540-25X*
	55.00		SP-4-M0550-10X*	SP-4-M0550-15X*	SP-4-M0550-25X*
	56.00		SP-4-M0560-10X*	SP-4-M0560-15X*	SP-4-M0560-25X*
	57.00		SP-4-M0570-10X*	SP-4-M0570-15X*	SP-4-M0570-25X*
	58.00		SP-4-M0580-10X*	SP-4-M0580-15X*	SP-4-M0580-25X*
	59.00		SP-4-M0590-10X*	SP-4-M0590-15X*	SP-4-M0590-25X*
	60.00		SP-4-M0600-10X*	SP-4-M0600-15X*	SP-4-M0600-25X*
	61.00		SP-4-M0610-10X*	SP-4-M0610-15X*	SP-4-M0610-25X*
	62.00		SP-4-M0620-10X*	SP-4-M0620-15X*	SP-4-M0620-25X*
	63.00		SP-4-M0630-10X*	SP-4-M0630-15X*	SP-4-M0630-25X*
	64.00		SP-4-M0640-10X*	SP-4-M0640-15X*	SP-4-M0640-25X*
	65.00		SP-4-M0650-10X*	SP-4-M0650-15X*	SP-4-M0650-25X*
5 64 to 77	64.00	11.1 (7/16")	SP-5-M0640-10X*	SP-5-M0640-15X*	--
	66.00		SP-5-M0660-10X*	SP-5-M0660-15X*	--
	68.00		SP-5-M0680-10X*	SP-5-M0680-15X*	--
	70.00		SP-5-M0700-10X*	SP-5-M0700-15X*	--
	72.00		SP-5-M0720-10X*	SP-5-M0720-15X*	--
	74.00		SP-5-M0740-10X*	SP-5-M0740-15X*	--
	76.00		SP-5-M0760-10X*	SP-5-M0760-15X*	--
6 78 to 89	77.00	11.1 (7/16")	SP-5-M0770-10X*	SP-5-M0770-15X*	--
	78.00		SP-6-M0780-10X*	SP-6-M0780-15X*	--
	80.00		SP-6-M0800-10X*	SP-6-M0800-15X*	--
	82.00		SP-6-M0820-10X*	SP-6-M0820-15X*	--
	84.00		SP-6-M0840-10X*	SP-6-M0840-15X*	--
	86.00		SP-6-M0860-10X*	SP-6-M0860-15X*	--
	88.00		SP-6-M0880-10X*	SP-6-M0880-15X*	--
7 90 to 100	89.00	11.1 (7/16")	SP-6-M0890-10X*	SP-6-M0890-15X*	--
	90.00		SP-7-M0900-10X*	SP-7-M0900-15X*	--
	92.00		SP-7-M0920-10X*	SP-7-M0920-15X*	--
	94.00		SP-7-M0940-10X*	SP-7-M0940-15X*	--
	96.00		SP-7-M0960-10X*	SP-7-M0960-15X*	--
	98.00		SP-7-M0980-10X*	SP-7-M0980-15X*	--
	100.00		SP-7-M1000-10X*	SP-7-M1000-15X*	--
8 102 to 144	102.00	11.1 (7/16")	SP-8-M1020-10X*	SP-8-M1020-15X*	--
	104.00		SP-8-M1040-10X*	SP-8-M1040-15X*	--
	106.00		SP-8-M1060-10X*	SP-8-M1060-15X*	--
	108.00		SP-8-M1080-10X*	SP-8-M1080-15X*	--
	110.00		SP-8-M1100-10X*	SP-8-M1100-15X*	--
	112.00		SP-8-M1120-10X*	SP-8-M1120-15X*	--
	114.00		SP-8-M1140-10X*	SP-8-M1140-15X*	--

\* 涂层代码, 型号后面加涂层代码 C100=T C300=A C500=H

材料对应涂层的种类表

涂层Coating	涂层代码Coating code	10材料 10 Material	15材料 15 Material	25材料 25 Material
C100	T	■	■	
C300	A	■	■	■
C500	H		■	■

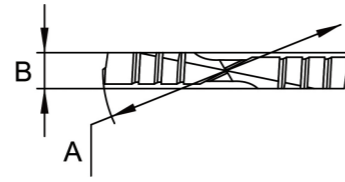
Insert table parameters (imperial)  
刀片参数 (英制)



接口 Connector	A直径 Diameter (mm)	公制 (Metric)	B厚度 Thickness (mm/inch)	10 (粉末高速钢) 10 (Powder HSS)	15 (高性能粉末高速钢) 15 (High-performance powder HSS)	25 (顶级性能粉末高速钢) 25 (Top-level powder HSS)
规格区间 (mm)				型号 Type	型号 Type	型号 Type
Y 3/8"(0.3750") to 27/64"(0.4219")	3/8"	9.53	2.38 (3/32")	--	--	SP-Y-I0375-25X*
	25/64"	9.92		--	--	SP-Y-I0390-25X*
	13/32"	10.32		--	--	SP-Y-I0406-25X*
Z 7/16"(0.4375") to 1/2"(0.5000")	27/64"	10.72	2.38 (3/32")	--	--	SP-Y-I0421-25X*
	7/16"	11.11		--	--	SP-Y-I0437-25X*
	29/64"	11.51		--	--	SP-Y-I0453-25X*
	15/32"	11.91		--	--	SP-Y-I0468-25X*
	31/64"	12.30		--	--	SP-Z-I0484-25X*
O 33/64"(0.5156") to 11/16"(0.6875")	1/2"	12.70	3.18 (1/8")	--	--	SP-Z-I0500-25X*
	33/64"	13.10		--	--	SP-Z-I0515-25X*
	17/32"	13.49		--	--	SP-Z-I0531-25X*
	35/64"	13.89		--	--	SP-Z-I0546-25X*
	9/16"	14.29		--	--	SP-O-I0562-25X*
	37/64"	14.68		--	--	SP-O-I0578-25X*
	19/32"	15.08		--	--	SP-O-I0593-25X*
	39/64"	15.48		--	--	SP-O-I0609-25X*
	5/8"	15.88		--	--	SP-O-I0625-25X*
	41/64"	16.27		--	--	SP-O-I0640-25X*
	21/32"	16.67		--	--	SP-O-I0656-25X*
43/64"	17.07	--	--	SP-O-I0671-25X*		
1 45/64" (0.7031") to 15/16" (0.9375")	11/16"	17.46	3.97 (5/32")	--	--	SP-O-I0687-25X*
	45/64"	17.86		SP-1-I0703-10X*	SP-1-I0703-15X*	SP-1-I0703-25X*
	23/32"	18.26		SP-1-I0718-10X*	SP-1-I0718-15X*	SP-1-I0718-25X*
	47/64"	18.65		SP-1-I0734-10X*	SP-1-I0734-15X*	SP-1-I0734-25X*
	3/4"	19.05		SP-1-I0750-10X*	SP-1-I0750-15X*	SP-1-I0750-25X*
	49/64"	19.45		SP-1-I0765-10X*	SP-1-I0765-15X*	SP-1-I0765-25X*
	25/32"	19.84		SP-1-I0781-10X*	SP-1-I0781-15X*	SP-1-I0781-25X*
	51/64"	20.24		SP-1-I0796-10X*	SP-1-I0796-15X*	SP-1-I0796-25X*
	13/16"	20.64		SP-1-I0812-10X*	SP-1-I0812-15X*	SP-1-I0812-25X*
	27/32"	21.43		SP-1-I0843-10X*	SP-1-I0843-15X*	SP-1-I0843-25X*
	55/64"	21.83		SP-1-I0859-10X*	SP-1-I0859-15X*	SP-1-I0859-25X*
	7/8"	22.23		SP-1-I0875-10X*	SP-1-I0875-15X*	SP-1-I0875-25X*
	57/64"	22.62		SP-1-I0890-10X*	SP-1-I0890-15X*	SP-1-I0890-25X*
	29/32"	23.02		SP-1-I0906-10X*	SP-1-I0906-15X*	SP-1-I0906-25X*
	59/64"	23.42		SP-1-I0921-10X*	SP-1-I0921-15X*	SP-1-I0921-25X*
15/16"	23.81	SP-1-I0937-10X*	SP-1-I0937-15X*	SP-1-I0937-25X*		
2 31/32" (0.9688") to 1-3/8" (1.3750")	31/32"	24.61	4.76 (3/16")	SP-2-I0968-10X*	SP-2-I0968-15X*	SP-2-I0968-25X*
	1"	25.40		SP-2-I1000-10X*	SP-2-I1000-15X*	SP-2-I1000-25X*
	1-1/64"	25.80		SP-2-I1015-10X*	SP-2-I1015-15X*	SP-2-I1015-25X*
	1-1/32"	26.19		SP-2-I1031-10X*	SP-2-I1031-15X*	SP-2-I1031-25X*
	1-3/64"	26.59		SP-2-I1046-10X*	SP-2-I1046-15X*	SP-2-I1046-25X*
	1-1/16"	26.99		SP-2-I1062-10X*	SP-2-I1062-15X*	SP-2-I1062-25X*
	1-3/32"	27.78		SP-2-I1093-10X*	SP-2-I1093-15X*	SP-2-I1093-25X*
	1-7/64"	28.18		SP-2-I1109-10X*	SP-2-I1109-15X*	SP-2-I1109-25X*
	1-1/8"	28.58		SP-2-I1125-10X*	SP-2-I1125-15X*	SP-2-I1125-25X*
	1-5/32"	29.37		SP-2-I1156-10X*	SP-2-I1156-15X*	SP-2-I1156-25X*
	1-3/16"	30.16		SP-2-I1187-10X*	SP-2-I1187-15X*	SP-2-I1187-25X*
	1-7/32"	30.96		SP-2-I1218-10X*	SP-2-I1218-15X*	SP-2-I1218-25X*
	1-1/4"	31.75		SP-2-I1250-10X*	SP-2-I1250-15X*	SP-2-I1250-25X*
	1-9/32"	32.54		SP-2-I1281-10X*	SP-2-I1281-15X*	SP-2-I1281-25X*
	1-5/16"	33.34		SP-2-I1312-10X*	SP-2-I1312-15X*	SP-2-I1312-25X*
	1-11/32"	34.13		SP-2-I1343-10X*	SP-2-I1343-15X*	SP-2-I1343-25X*
	1-3/8"	34.93		SP-2-I1375-10X*	SP-2-I1375-15X*	SP-2-I1375-25X*

\* 涂层代码, 型号后面加涂层代码 C100=T C300=A C500=H

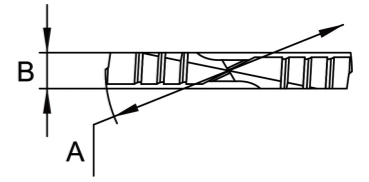
Insert table parameters (imperial)  
刀片参数 (英制)



接口 Connector	A直径 Diameter (mm)	公制 (Metric)	B厚度 Thickness (mm/inch)	10 (粉末高速钢) 10 (Powder HSS)	15 (高性能粉末高速钢) 15 (High-performance powder HSS)	25 (顶级性能粉末高速钢) 25 (Top-level powder HSS)		
规格区间 (mm)				型号 Type	型号 Type	型号 Type		
3 1-13/32" (1.4063") to 1-7/8" (1.875")	1-13/32"	35.72	6.35 (1/4")	SP-3-I1406-10X*	SP-3-I1406-15X*	SP-3-I1406-25X*		
	1-7/16"	36.51		SP-3-I1437-10X*	SP-3-I1437-15X*	SP-3-I1437-25X*		
	1-15/32"	37.31		SP-3-I1468-10X*	SP-3-I1468-15X*	SP-3-I1468-25X*		
	1-1/2"	38.10		SP-3-I1500-10X*	SP-3-I1500-15X*	SP-3-I1500-25X*		
	1-17/32"	38.89		SP-3-I1531-10X*	SP-3-I1531-15X*	SP-3-I1531-25X*		
	1-9/16"	39.69		SP-3-I1562-10X*	SP-3-I1562-15X*	SP-3-I1562-25X*		
	1-19/32"	40.48		SP-3-I1593-10X*	SP-3-I1593-15X*	SP-3-I1593-25X*		
	1-5/8"	41.28		SP-3-I1625-10X*	SP-3-I1625-15X*	SP-3-I1625-25X*		
	1-21/32"	42.07		SP-3-I1656-10X*	SP-3-I1656-15X*	SP-3-I1656-25X*		
	1-11/16"	42.86		SP-3-I1687-10X*	SP-3-I1687-15X*	SP-3-I1687-25X*		
	1-23/32"	43.66		SP-3-I1718-10X*	SP-3-I1718-15X*	SP-3-I1718-25X*		
	1-3/4"	44.45		SP-3-I1750-10X*	SP-3-I1750-15X*	SP-3-I1750-25X*		
	1-25/32"	45.24		SP-3-I1781-10X*	SP-3-I1781-15X*	SP-3-I1781-25X*		
	1-13/16"	46.04		SP-3-I1812-10X*	SP-3-I1812-15X*	SP-3-I1812-25X*		
	1-27/32"	46.83		SP-3-I1843-10X*	SP-3-I1843-15X*	SP-3-I1843-25X*		
	1-7/8"	47.63		SP-3-I1875-10X*	SP-3-I1875-15X*	SP-3-I1875-25X*		
4 1-29/32" (1.9063") to 2-9/16" (2.5625")	1-29/32"	48.42	7.94 (5/16")	SP-4-I1906-10X*	SP-4-I1906-15X*	SP-4-I1906-25X*		
	1-15/16"	49.21		SP-4-I1937-10X*	SP-4-I1937-15X*	SP-4-I1937-25X*		
	1-31/32"	50.01		SP-4-I1968-10X*	SP-4-I1968-15X*	SP-4-I1968-25X*		
	2"	50.80		SP-4-I2000-10X*	SP-4-I2000-15X*	SP-4-I2000-25X*		
	2-1/32"	51.59		SP-4-I2031-10X*	SP-4-I2031-15X*	SP-4-I2031-25X*		
	2-1/16"	52.39		SP-4-I2062-10X*	SP-4-I2062-15X*	SP-4-I2062-25X*		
	2-3/32"	53.18		SP-4-I2093-10X*	SP-4-I2093-15X*	SP-4-I2093-25X*		
	2-1/8"	53.98		SP-4-I2125-10X*	SP-4-I2125-15X*	SP-4-I2125-25X*		
	2-5/32"	54.79		SP-4-I2156-10X*	SP-4-I2156-15X*	SP-4-I2156-25X*		
	2-3/16"	55.56		SP-4-I2187-10X*	SP-4-I2187-15X*	SP-4-I2187-25X*		
	2-7/32"	56.36		SP-4-I2218-10X*	SP-4-I2218-15X*	SP-4-I2218-25X*		
	2-1/4"	57.15		SP-4-I2250-10X*	SP-4-I2250-15X*	SP-4-I2250-25X*		
	2-9/32"	57.94		SP-4-I2281-10X*	SP-4-I2281-15X*	SP-4-I2281-25X*		
	2-5/16"	58.74		SP-4-I2312-10X*	SP-4-I2312-15X*	SP-4-I2312-25X*		
	2-11/32"	59.53		SP-4-I2343-10X*	SP-4-I2343-15X*	SP-4-I2343-25X*		
	2-3/8"	60.33		SP-4-I2375-10X*	SP-4-I2375-15X*	SP-4-I2375-25X*		
	2-13/32"	61.12		SP-4-I2406-10X*	SP-4-I2406-15X*	SP-4-I2406-25X*		
	2-7/16"	61.91		SP-4-I2437-10X*	SP-4-I2437-15X*	SP-4-I2437-25X*		
	2-15/32"	62.71		SP-4-I2468-10X*	SP-4-I2468-15X*	SP-4-I2468-25X*		
	2-1/2"	63.50		SP-4-I2500-10X*	SP-4-I2500-15X*	SP-4-I2500-25X*		
	2-17/32"	64.29		SP-4-I2531-10X*	SP-4-I2531-15X*	SP-4-I2531-25X*		
	2-9/16"	65.09		SP-4-I2562-10X*	SP-4-I2562-15X*	SP-4-I2562-25X*		
	5 2-1/2" (2.5000") to 3" (3.000")	2-1/2"		63.50	11.1 (7/16")	SP-5-I2500-10X*	SP-5-I2500-15X*	--
		2-17/32"		64.29		SP-5-I2531-10X*	SP-5-I2531-15X*	--
2-9/16"		65.09	SP-5-I2562-10X*	SP-5-I2562-15X*		--		
2-19/32"		65.88	SP-5-I2593-10X*	SP-5-I2593-15X*		--		
2-5/8"		66.68	SP-5-I2625-10X*	SP-5-I2625-15X*		--		
2-21/32"		67.47	SP-5-I2656-10X*	SP-5-I2656-15X*		--		
2-11/16"		68.26	SP-5-I2687-10X*	SP-5-I2687-15X*		--		
2-23/32"		69.05	SP-5-I2718-10X*	SP-5-I2718-15X*		--		
2-3/4"		69.85	SP-5-I2750-10X*	SP-5-I2750-15X*		--		
2-25/32"		70.64	SP-5-I2781-10X*	SP-5-I2781-15X*		--		
2-13/16"		71.44	SP-5-I2812-10X*	SP-5-I2812-15X*		--		
2-27/32"		72.23	SP-5-I2843-10X*	SP-5-I2843-15X*		--		
2-7/8"		73.03	SP-5-I2875-10X*	SP-5-I2875-15X*		--		
2-29/32"		73.82	SP-5-I2906-10X*	SP-5-I2906-15X*		--		
2-15/16"		74.61	SP-5-I2937-10X*	SP-5-I2937-15X*		--		
2-31/32"		75.41	SP-5-I2968-10X*	SP-5-I2968-15X*		--		
3"		76.20	SP-5-I3000-10X*	SP-5-I3000-15X*		--		

\* 涂层代码, 型号后面加涂层代码 C100=T C300=A C500=H

Insert table parameters (imperial)  
刀片参数 (英制)



接口 Connector	A直径 Diameter (mm)	公制 (Metric)	B厚度 Thickness (mm/inch)	10 (粉末高速钢) 10 (Powder HSS)	15 (高性能粉末高速钢) 15 (High-performance powder HSS)	25 (顶级性能粉末高速钢) 25 (Top-level powder HSS)
规格区间 (mm)				型号 Type	型号 Type	型号 Type
6 3-1/32" (3.0312") to 3-1/2" (3.5000")	3-1/32"	76.99	11.1 (7/16")	SP-6-I3031-10X*	SP-6-I3031-15X*	--
	3-1/16"	77.79		SP-6-I3062-10X*	SP-6-I3062-15X*	--
	3-3/32"	78.58		SP-6-I3093-10X*	SP-6-I3093-15X*	--
	3-1/8"	79.38		SP-6-I3125-10X*	SP-6-I3125-15X*	--
	3-5/32"	80.17		SP-6-I3156-10X*	SP-6-I3156-15X*	--
	3-3/16"	80.96		SP-6-I3187-10X*	SP-6-I3187-15X*	--
	3-7/32"	81.76		SP-6-I3218-10X*	SP-6-I3218-15X*	--
	3-1/4"	82.55		SP-6-I3250-10X*	SP-6-I3250-15X*	--
	3-9/32"	83.34		SP-6-I3281-10X*	SP-6-I3281-15X*	--
	3-5/16"	84.14		SP-6-I3312-10X*	SP-6-I3312-15X*	--
	3-11/32"	84.93		SP-6-I3343-10X*	SP-6-I3343-15X*	--
	3-3/8"	85.73		SP-6-I3375-10X*	SP-6-I3375-15X*	--
	3-13/32"	86.52		SP-6-I3406-10X*	SP-6-I3406-15X*	--
	3-7/16"	87.31		SP-6-I3437-10X*	SP-6-I3437-15X*	--
	3-15/32"	88.11		SP-6-I3468-10X*	SP-6-I3468-15X*	--
	3-1/2"	88.90		SP-6-I3500-10X*	SP-6-I3500-15X*	--
7 3-17/32" (3.5313") to 4" (4.0000")	3-17/32"	89.69	11.1 (7/16")	SP-7-I3531-10X*	SP-7-I3531-15X*	--
	3-9/16"	90.49		SP-7-I3562-10X*	SP-7-I3562-15X*	--
	3-19/32"	91.28		SP-7-I3593-10X*	SP-7-I3593-15X*	--
	3-5/8"	92.08		SP-7-I3625-10X*	SP-7-I3625-15X*	--
	3-21/32"	92.87		SP-7-I3656-10X*	SP-7-I3656-15X*	--
	3-11/16"	93.66		SP-7-I3687-10X*	SP-7-I3687-15X*	--
	3-23/32"	94.46		SP-7-I3718-10X*	SP-7-I3718-15X*	--
	3-3/4"	95.25		SP-7-I3750-10X*	SP-7-I3750-15X*	--
	3-25/32"	96.04		SP-7-I3781-10X*	SP-7-I3781-15X*	--
	3-13/16"	96.84		SP-7-I3812-10X*	SP-7-I3812-15X*	--
	3-27/32"	97.63		SP-7-I3843-10X*	SP-7-I3843-15X*	--
	3-7/8"	98.43		SP-7-I3875-10X*	SP-7-I3875-15X*	--
	3-29/32"	99.22		SP-7-I3906-10X*	SP-7-I3906-15X*	--
	3-15/16"	100.01		SP-7-I3937-10X*	SP-7-I3937-15X*	--
	3-31/32"	100.81		SP-7-I3968-10X*	SP-7-I3968-15X*	--
	4"	101.60		SP-7-I4000-10X*	SP-7-I4000-15X*	--
8 4-1/16" (4.0625") to 4-1/2" (4.5000")	4-1/64"	102.00	11.1 (7/16")	SP-8-I4015-10X*	SP-8-I4015-15X*	--
	4-1/16"	103.19		SP-8-I4062-10X*	SP-8-I4062-15X*	--
	4-1/8"	104.78		SP-8-I4125-10X*	SP-8-I4125-15X*	--
	4-3/16"	106.36		SP-8-I4187-10X*	SP-8-I4187-15X*	--
	4-1/4"	107.95		SP-8-I4250-10X*	SP-8-I4250-15X*	--
	4-5/16"	109.54		SP-8-I4312-10X*	SP-8-I4312-15X*	--
	4-3/8"	111.13		SP-8-I4375-10X*	SP-8-I4375-15X*	--
	4-7/16"	112.71		SP-8-I4437-10X*	SP-8-I4437-15X*	--
4-1/2"	114.30	SP-8-I4500-10X*	SP-8-I4500-15X*	--		

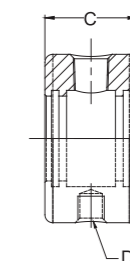
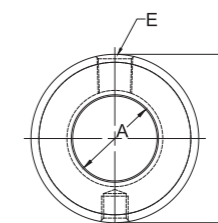
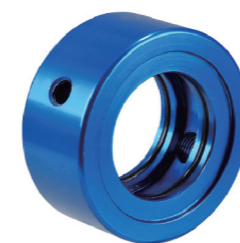
\* 涂层代码, 型号后面加涂层代码 C100=T C300=A C500=H

材料对应涂层的种类表

涂层Coating	涂层代码Coating code	10材料 10 Material	15材料 15 Material	25材料 25 Material
C100	T	■	■	■
C300	A	■	■	■
C500	H	■	■	■



Oil ring  
供油环



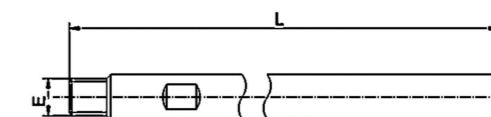
公制 Metric

型号 type	A 内径 Inside diameter	B 外径 Outside diameter	C 厚度 Thickness	D 驱动杆螺纹 Driving Rod Thread	E 冷却嘴螺纹 Cooling nozzle thread	密封圈 O-Ring
SH-1905R	19.05	44.45	22.23	M8×1.25	1/8"	2104028
SH-2540R	25.40	53.97	28.57	M8×1.25	1/8"	2104030
SH-3175R	31.75	63.50	34.92	M10×1.5	1/4"	2104026
SH-4445R	44.45	76.20	34.92	M10×1.5	1/4"	2104027
SH-5715R	57.15	95.27	44.45	M12×1.75	1/2"	2104029

英制 Imperia

型号 type	A 内径 Inside diameter	B 外径 Outside diameter	C 厚度 Thickness	D 驱动杆螺纹 Driving Rod Thread	E 冷却嘴螺纹 Cooling nozzle thread	密封圈 O-Ring
SH-0750R	3/4"	1-3/4"	7/8"	5/16"-NC	1/8"	2104028
SH-1000R	1"	2-1/8"	1-1/8"	5/16"-NC	1/8"	2104030
SH-1250R	1-1/4"	2-1/2"	1-3/8"	3/8"-NC	1/4"	2104026
SH-1750R	1-3/4"	3"	1-3/8"	3/8"-NC	1/4"	2104027
SH-2250R	2-1/4"	3-3/4"	1-3/4"	1/2"-NC	1/2"	2104029

Drive Rod  
驱动杆



公制 Metric

型号 type	螺纹 Thread	全长 Total length	匹配的供油环 Matched-oil ring
SG-M8-250	M8×1.25	250	SH-1905R
SG-M8-250	M8×1.25	250	SH-2540R
SG-M10-250	M10×1.5	250	SH-3175R
SG-M10-250	M10×1.5	250	SH-4445R
SG-M12-250	M12×1.75	250	SH-5715R

英制 Imperia

型号 type	螺纹 Thread	全长 Total length	匹配的供油环 Matched-oil ring
SG-5/16"-250	5/16"-UNC	250	SH-0750B
SG-5/16"-250	5/16"-UNC	250	SH-1000B
SG-3/8"-250	3/8"-UNC	250	SH-1250B
SG-3/8"-250	3/8"-UNC	250	SH-1750B
SG-1/2"-250	1/2"-UNC	250	SH-2250B

冷却水管我们可以根据用户的钻孔设备技术数据提供冷却水管。  
We can offer coolant pipe according to technical data of drilling machine which offered by user.